

P01-37x120/20x100 86

P01-37x120/80x160 88

P01-37x120/180x260 90

P01-37x120/280x360 92

P01-37x120/380x460 94

P01-37x120/480x560 96

P01-37x120/580x660 98

P01-37x120/680x760 100

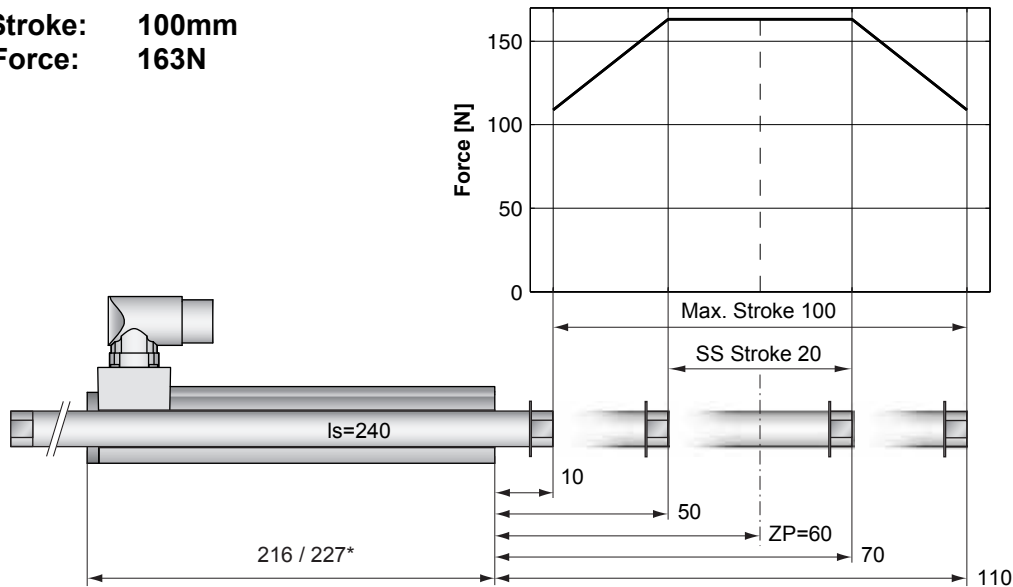
P01-37x120/780x860 102

P01-37x120/980x1060 104

P01-37x120/1180x1260 106

P01-37x120/1380x1460 108

Max. Stroke: 100mm
Peak Force: 163N



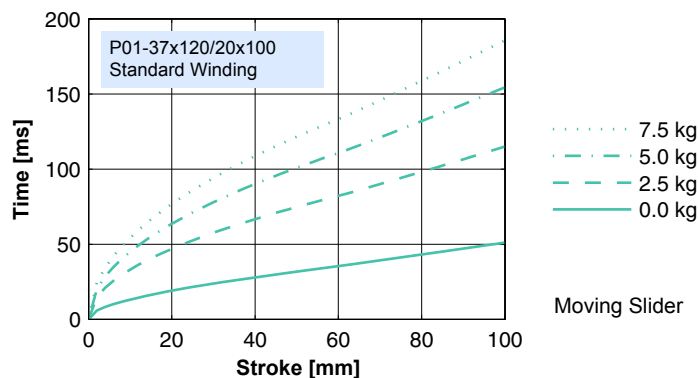
Standard Winding:
 — E1100-HC, 72VDC
 — E1100, 72VDC & E1001, 72VDC

Dimensions in mm
 *Cable Type

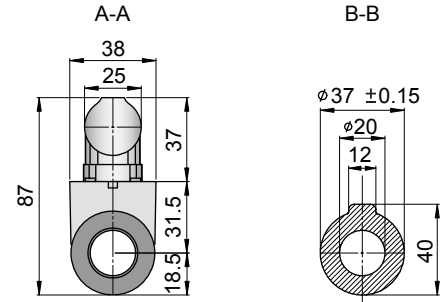
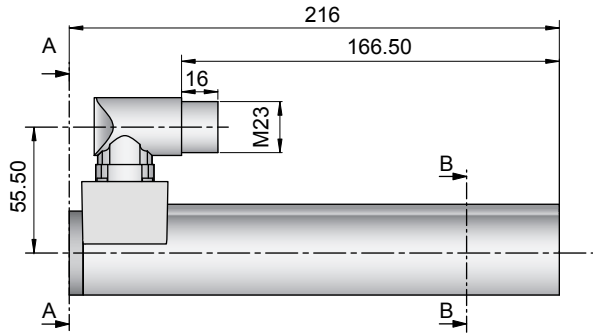
Motor Specification

	P01-	Connector Type	Cable Type
		37x120/20x100-C	37x120/20x100-P150 37x120/20x100-C20
Extended Stroke ES	mm (in)	100 (3.94)	100 (3.94)
Standard Stroke SS	mm (in)	20 (0.79)	20 (0.79)
Peak Force E1100-HC	N (lbf)	163 (36.7)	163 (36.7)
Peak Force E1100 / E1001	N (lbf)	163 (36.7)	163 (36.7)
Cont. Force	N (lbf)	29 (6.5)	29 (6.5)
Cont. Force Fan cooling	N (lbf)	54 (12.2)	54 (12.2)
Border Force	%	67	67
Force Constant	N/A (lbf/A)	20.4 (4.59)	20.4 (4.59)
Max. Current @ 72VDC	A	8.0	8.0
Max. Current @ 48VDC	A	6.3	6.3
Max. Velocity @ 72VDC	m/s (in/s)	3.2 (128)	3.2 (128)
Max. Velocity @ 48VDC	m/s (in/s)	2.2 (85)	2.2 (85)
Phase Resist. 25/80 °C	Ohm	6.2/7.5	6.2/7.5
Phase Inductance	mH	3.1	3.1
Thermal Resistance	°K/W	3.6	3.6
Thermal Time Const.	sec	2900	2900
Stator Diameter	mm (in)	37 (1.46)	37 (1.46)
Stator Length	mm (in)	216 (8.50)	227 (8.94)
Stator Mass	g (lb)	740 (1.63)	740 (1.63)
Slider Diameter	mm (in)	20 (0.79)	20 (0.79)
Slider Length	mm (in)	240 (9.45)	240 (9.45)
Slider Mass	g (lb)	460 (1.01)	460 (1.01)
Position Repeatability	mm (in)	±0.05 (±0.0020)	±0.05 (±0.0020)
Linearity	%	±0.40	±0.40
Repeatability with EPS	mm (in)	±0.01 (±0.0004)	±0.01 (±0.0004)
Linearity with EPS	mm (in)	±0.01 (±0.0004)	±0.01 (±0.0004)

Position-Time Diagram

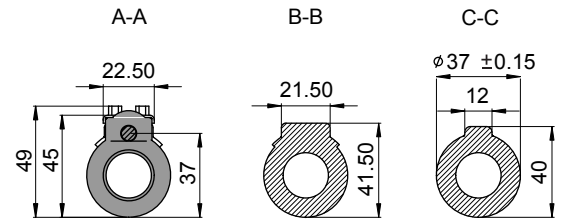
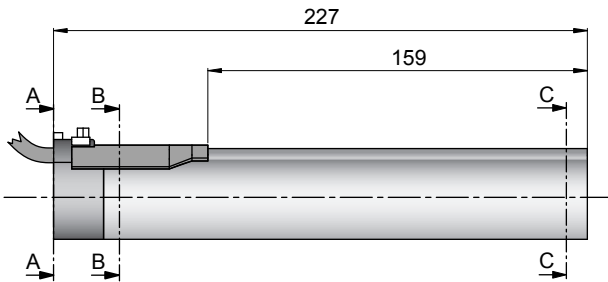


Connector Type



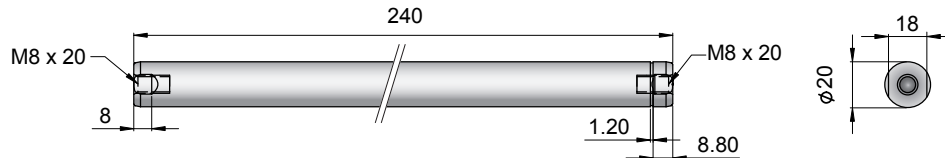
Linear Motor		Stator		Slider	
Type	Art.No	Type	Art. No.	Type	Art. No.
P01-37x120/20x100-C	-->	PS01-37x120-C	0150-1223	& PL01-20x240/160	0150-1346

Cable Type



Linear Motor		Stator		Slider	
Type	Art.No	Type	Art. No.	Type	Art. No.
P01-37x120/20x100-P150	-->	PS01-37x120-P150	0150-1204	& PL01-20x240/160	0150-1346
P01-37x120/20x100-C20	-->	PS01-37x120-C20	0150-1237	& PL01-20x240/160	0150-1346

Slider



Standard Type	Slider Standard	PL01-20x240/160	0150-1346
Special Sliders	Heavy Duty Slider with WC/C-Coating	PL02-20x240/160	0150-1347
	Hollow Slider hole diameter 6.5mm	PL01-20x240/160-L	0150-1350
	High Clearance Slider d=19mm, m=415g	PL01-19x240/160	0150-1448

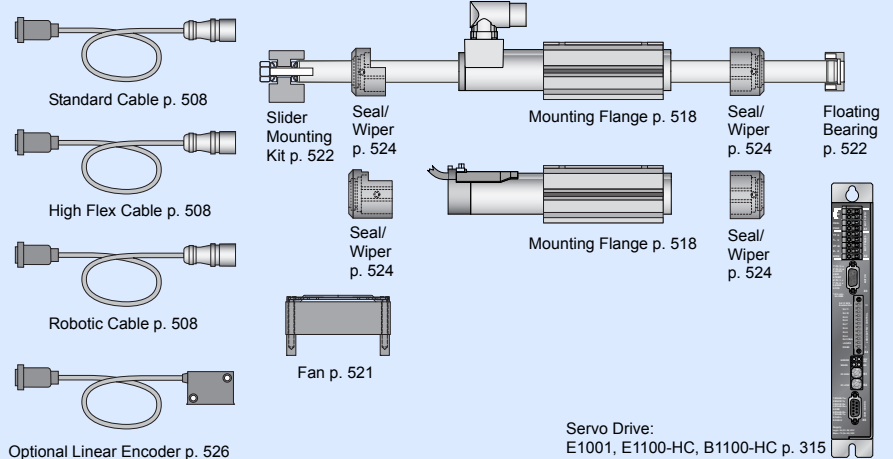
Connectors

Motor Connector Wiring

Cable Length:
P01-37x120... 1.5m
P01-37x120...-C20 0.2m

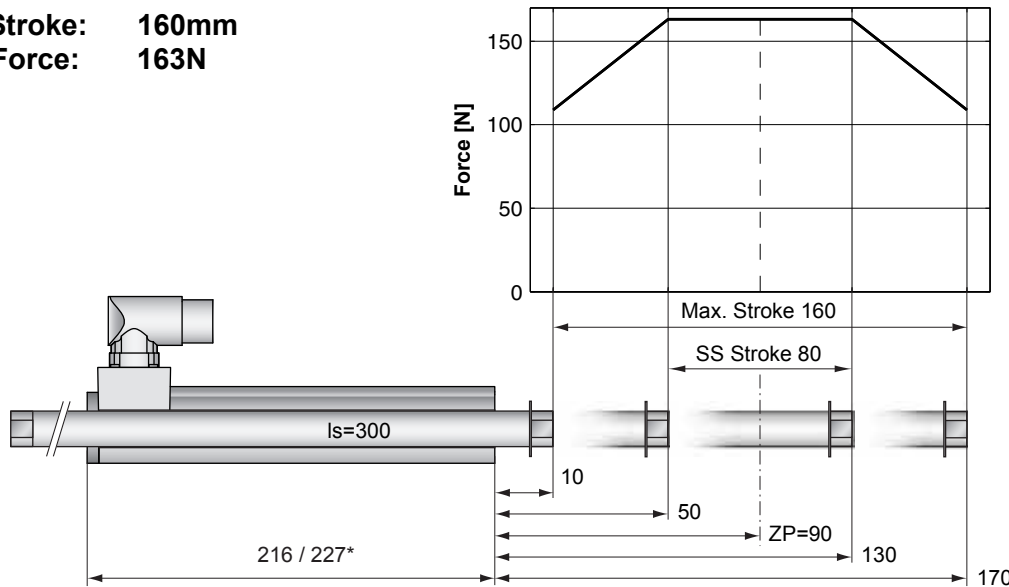
		P01-37...-C P01-37...-C20	P01-37...
Ph 1+	red	A	1
Ph 1-	pink	B	2
Ph 2+	blue	C	3
Ph 2-	grey	D	4
+5VDC	white	E	5
GND	inner Shield	F	6
Sine	yellow	G	7
Cosine	green	H	8
Temp.	black	L	9
Shield	outer Shield	Case	10

Accessoires



Servo Drive:
E1001, E1100-HC, B1100-HC p. 315

Max. Stroke: 160mm
Peak Force: 163N



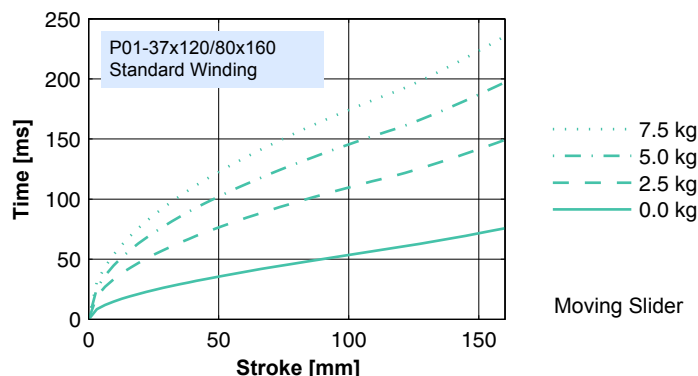
Standard Winding:
 — E1100-HC, 72VDC
 — E1100, 72VDC & E1001, 72VDC

Dimensions in mm
 *Cable Type

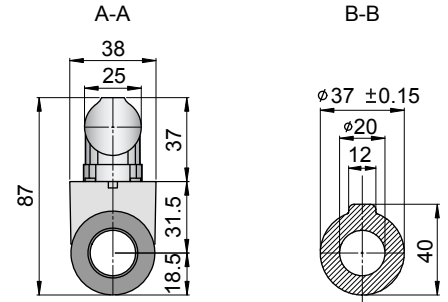
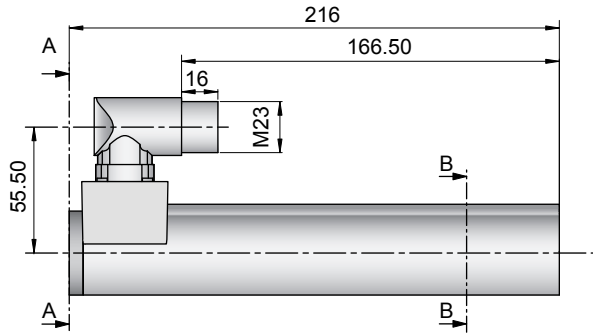
Motor Specification

	P01-	Connector Type	Cable Type
		37x120/80x160-C	37x120/80x160-P150 37x120/80x160-C20
Extended Stroke ES	mm (in)	160 (6.30)	160 (6.30)
Standard Stroke SS	mm (in)	80 (3.15)	80 (3.15)
Peak Force E1100-HC	N (lbf)	163 (36.7)	163 (36.7)
Peak Force E1100 / E1001	N (lbf)	163 (36.7)	163 (36.7)
Cont. Force	N (lbf)	29 (6.5)	29 (6.5)
Cont. Force Fan cooling	N (lbf)	54 (12.2)	54 (12.2)
Border Force	%	67	67
Force Constant	N/A (lbf/A)	20.4 (4.59)	20.4 (4.59)
Max. Current @ 72VDC	A	8.0	8.0
Max. Current @ 48VDC	A	6.3	6.3
Max. Velocity @ 72VDC	m/s (in/s)	3.2 (128)	3.2 (128)
Max. Velocity @ 48VDC	m/s (in/s)	2.2 (85)	2.2 (85)
Phase Resist. 25/80 °C	Ohm	6.2/7.5	6.2/7.5
Phase Inductance	mH	3.1	3.1
Thermal Resistance	°K/W	3.6	3.6
Thermal Time Const.	sec	2900	2900
Stator Diameter	mm (in)	37 (1.46)	37 (1.46)
Stator Length	mm (in)	216 (8.50)	227 (8.94)
Stator Mass	g (lb)	740 (1.63)	740 (1.63)
Slider Diameter	mm (in)	20 (0.79)	20 (0.79)
Slider Length	mm (in)	300 (11.81)	300 (11.81)
Slider Mass	g (lb)	599 (1.32)	599 (1.32)
Position Repeatability	mm (in)	±0.05 (±0.0020)	±0.05 (±0.0020)
Linearity	%	±0.30	±0.30
Repeatability with EPS	mm (in)	±0.01 (±0.0004)	±0.01 (±0.0004)
Linearity with EPS	mm (in)	±0.01 (±0.0004)	±0.01 (±0.0004)

Position-Time Diagram

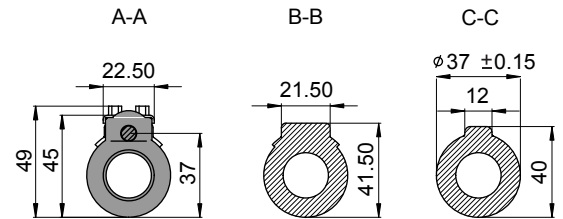
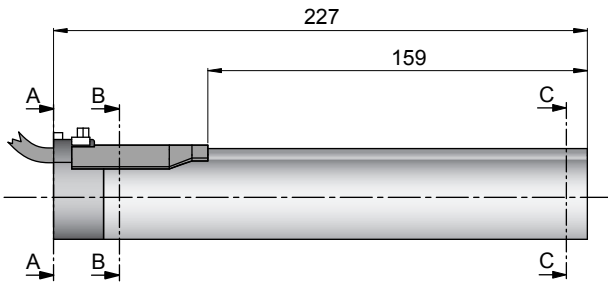


Connector Type



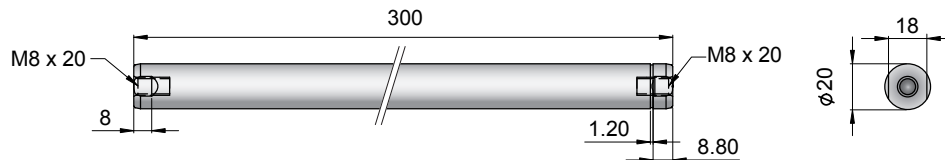
Linear Motor		Stator		Slider	
Type	Art.No	Type	Art. No.	Type	Art. No.
P01-37x120/80x160-C	-->	PS01-37x120-C	0150-1223	& PL01-20x300/220	0150-1348

Cable Type



Linear Motor		Stator		Slider	
Type	Art.No	Type	Art. No.	Type	Art. No.
P01-37x120/80x160-P150	-->	PS01-37x120-P150	0150-1204	& PL01-20x300/220	0150-1348
P01-37x120/80x160-C20	-->	PS01-37x120-C20	0150-1237	& PL01-20x300/220	0150-1348

Slider



Standard Type	Slider Standard	PL01-20x300/220	0150-1348
Special Sliders	Heavy Duty Slider with WC/C-Coating	PL02-20x300/220	0150-1349
	Hollow Slider hole diameter 6.5mm	PL01-20x300/220-L	0150-1351
	High Clearance Slider d=19mm, m=541g	PL01-19x300/220	0150-1449

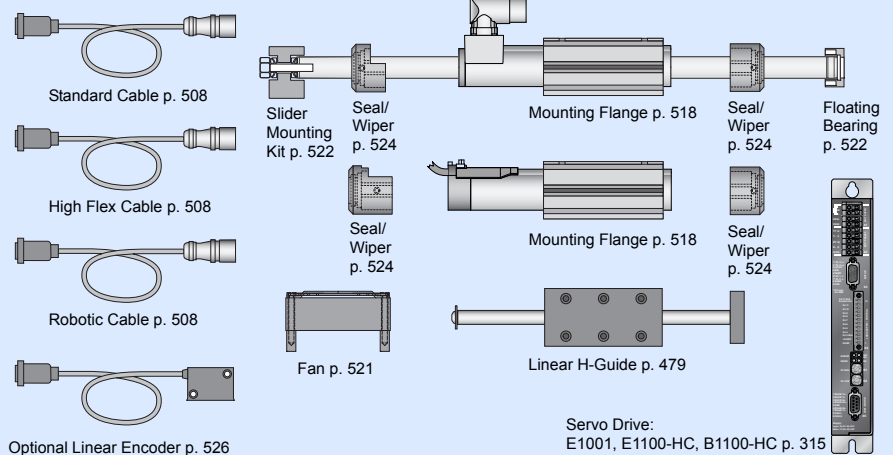
Connectors

Motor Connector Wiring

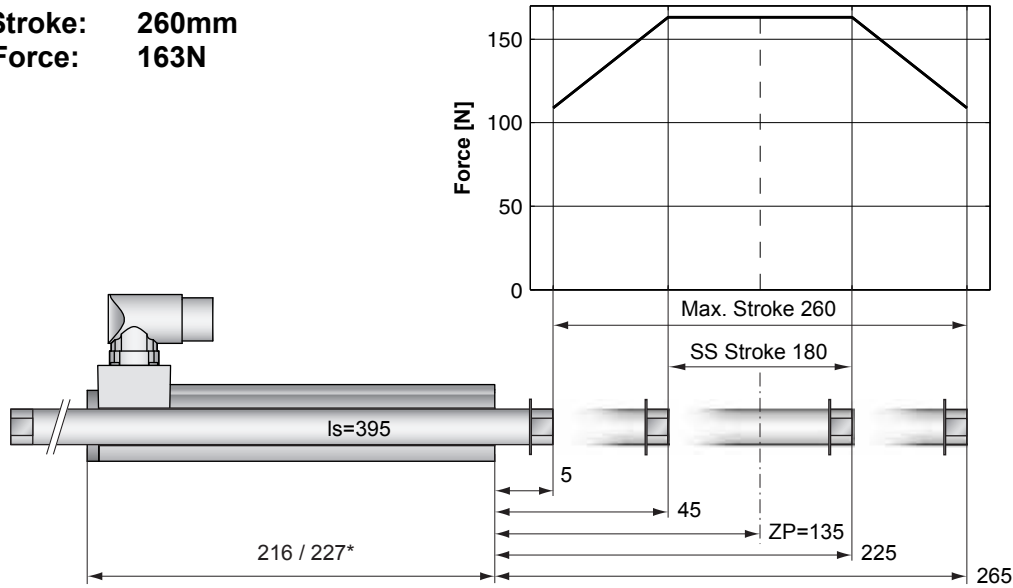
Cable Length:
P01-37x120... 1.5m
P01-37x120...-C20 0.2m

		P01-37...-C P01-37...-C20	P01-37...
Ph 1+	red	A	1
Ph 1-	pink	B	2
Ph 2+	blue	C	3
Ph 2-	grey	D	4
+5VDC	white	E	5
GND	inner Shield	F	6
Sine	yellow	G	7
Cosine	green	H	8
Temp.	black	L	9
Shield	outer Shield	Case	10

Accessoires



Max. Stroke: 260mm
Peak Force: 163N

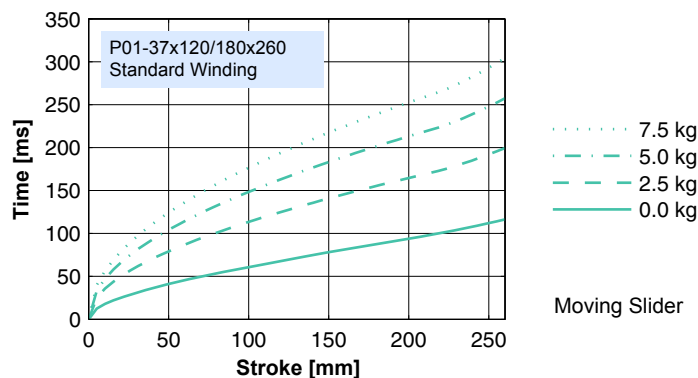


Dimensions in mm
 *Cable Type

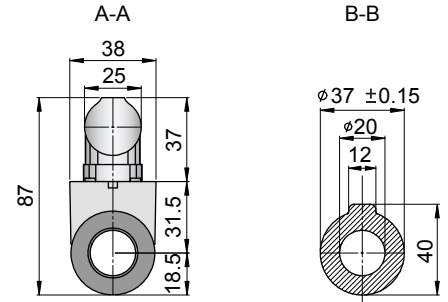
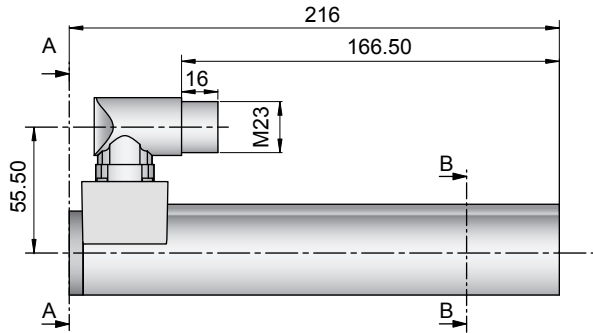
Motor Specification

	P01-	Connector Type	Cable Type
		37x120/180x260-C	37x120/180x260-P150 37x120/180x260-C20
Extended Stroke ES	mm (in)	260 (10.24)	260 (10.24)
Standard Stroke SS	mm (in)	180 (7.09)	180 (7.09)
Peak Force E1100-HC	N (lbf)	163 (36.7)	163 (36.7)
Peak Force E1100 / E1001	N (lbf)	163 (36.7)	163 (36.7)
Cont. Force	N (lbf)	29 (6.5)	29 (6.5)
Cont. Force Fan cooling	N (lbf)	54 (12.2)	54 (12.2)
Border Force	%	67	67
Force Constant	N/A (lbf/A)	20.4 (4.59)	20.4 (4.59)
Max. Current @ 72VDC	A	8.0	8.0
Max. Current @ 48VDC	A	6.3	6.3
Max. Velocity @ 72VDC	m/s (in/s)	3.2 (128)	3.2 (128)
Max. Velocity @ 48VDC	m/s (in/s)	2.2 (85)	2.2 (85)
Phase Resist. 25/80 °C	Ohm	6.2/7.5	6.2/7.5
Phase Inductance	mH	3.1	3.1
Thermal Resistance	°K/W	3.6	3.6
Thermal Time Const.	sec	2900	2900
Stator Diameter	mm (in)	37 (1.46)	37 (1.46)
Stator Length	mm (in)	216 (8.50)	227 (8.94)
Stator Mass	g (lb)	740 (1.63)	740 (1.63)
Slider Diameter	mm (in)	20 (0.79)	20 (0.79)
Slider Length	mm (in)	395 (15.55)	395 (15.55)
Slider Mass	g (lb)	829 (1.83)	829 (1.83)
Position Repeatability	mm (in)	±0.05 (±0.0020)	±0.05 (±0.0020)
Linearity	%	±0.20	±0.20
Repeatability with EPS	mm (in)	±0.01 (±0.0004)	±0.01 (±0.0004)
Linearity with EPS	mm (in)	±0.01 (±0.0004)	±0.01 (±0.0004)

Position-Time Diagram

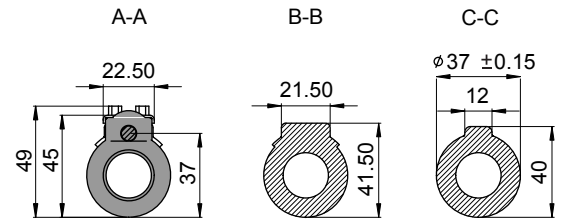
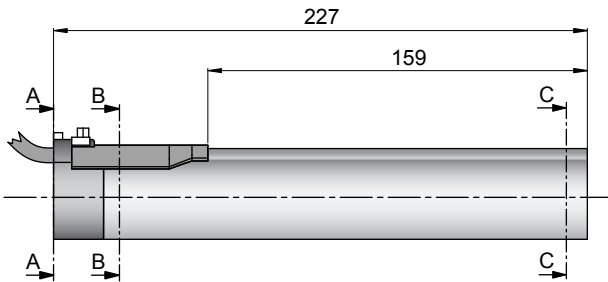


Connector Type



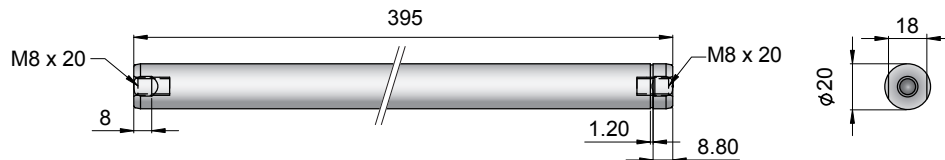
Linear Motor		Stator		Slider	
Type	Art.No	Type	Art. No.	Type	Art. No.
P01-37x120/180x260-C	-->	PS01-37x120-C	0150-1223	& PL01-20x395/320	0150-1318

Cable Type



Linear Motor		Stator		Slider	
Type	Art.No	Type	Art. No.	Type	Art. No.
P01-37x120/180x260-P150	-->	PS01-37x120-P150	0150-1204	& PL01-20x395/320	0150-1318
P01-37x120/180x260-C20	-->	PS01-37x120-C20	0150-1237	& PL01-20x395/320	0150-1318

Slider



Standard Type	Slider Standard	PL01-20x395/320	0150-1318
Special Sliders	Heavy Duty Slider with WC/C-Coating	PL02-20x395/320	0150-1319
	Hollow Slider hole diameter 6.5mm	PL01-20x395/320-L	0150-1354
	High Clearance Slider d=19mm, m=748g	PL01-19x395/320	0150-1452

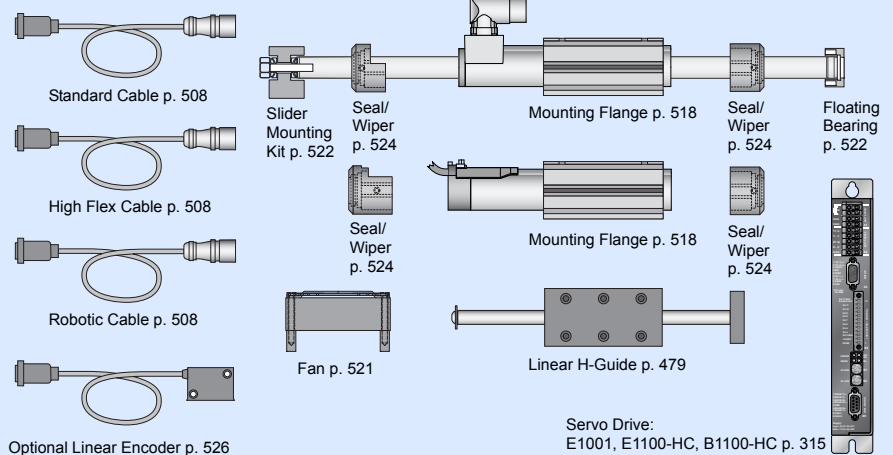
Connectors

Motor Connector Wiring

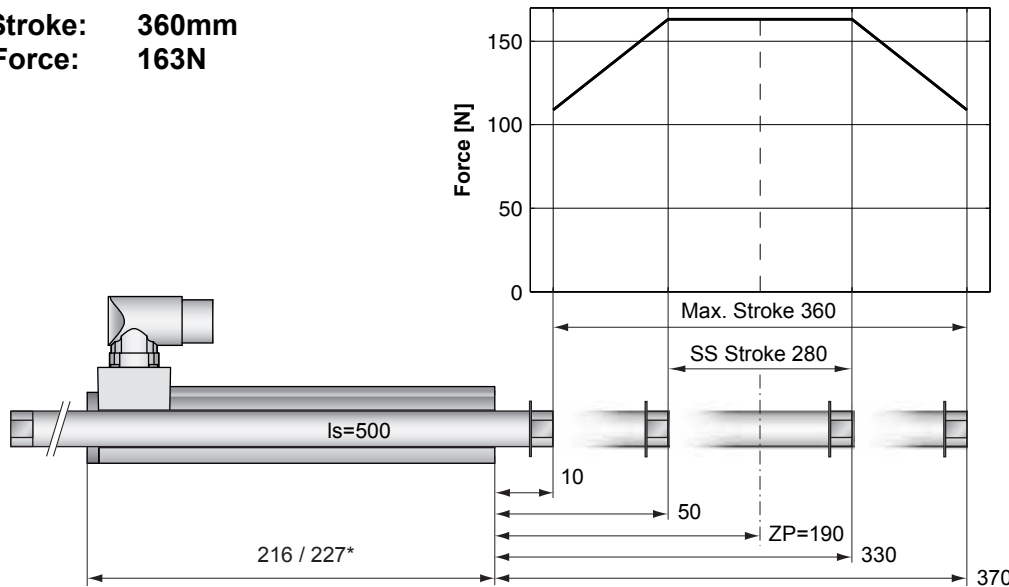
Cable Length:
P01-37x120... 1.5m
P01-37x120...-C20 0.2m

		P01-37...-C P01-37...-C20	P01-37...
Ph 1+	red	A	1
Ph 1-	pink	B	2
Ph 2+	blue	C	3
Ph 2-	grey	D	4
+5VDC	white	E	5
GND	inner Shield	F	6
Sine	yellow	G	7
Cosine	green	H	8
Temp.	black	L	9
Shield	outer Shield	Case	10

Accessoires



Max. Stroke: 360mm
Peak Force: 163N



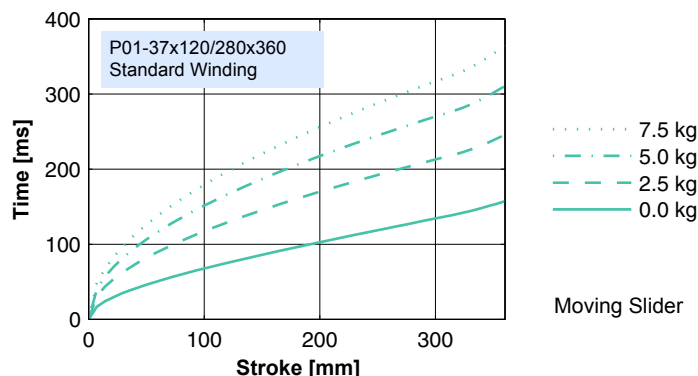
Standard Winding:
 — E1100-HC, 72VDC
 - - E1100, 72VDC & E1001, 72VDC

Dimensions in mm
 *Cable Type

Motor Specification

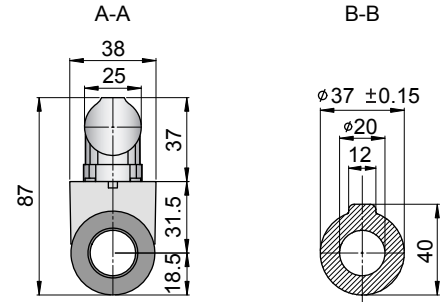
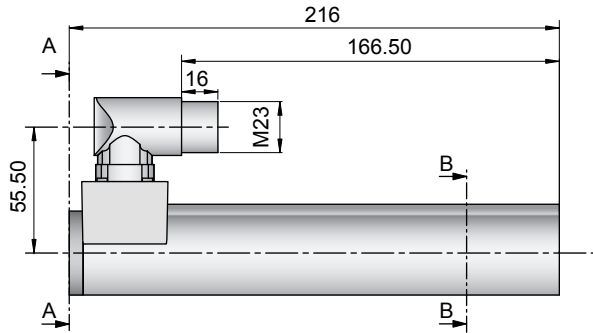
	P01-	Connector Type	Cable Type
		37x120/280x360-C	37x120/280x360-P150 37x120/280x360-C20
Extended Stroke ES	mm (in)	360 (14.17)	360 (14.17)
Standard Stroke SS	mm (in)	280 (11.02)	280 (11.02)
Peak Force E1100-HC	N (lbf)	163 (36.7)	163 (36.7)
Peak Force E1100 / E1001	N (lbf)	163 (36.7)	163 (36.7)
Cont. Force	N (lbf)	29 (6.5)	29 (6.5)
Cont. Force Fan cooling	N (lbf)	54 (12.2)	54 (12.2)
Border Force	%	67	67
Force Constant	N/A (lbf/A)	20.4 (4.59)	20.4 (4.59)
Max. Current @ 72VDC	A	8.0	8.0
Max. Current @ 48VDC	A	6.3	6.3
Max. Velocity @ 72VDC	m/s (in/s)	3.2 (128)	3.2 (128)
Max. Velocity @ 48VDC	m/s (in/s)	2.2 (85)	2.2 (85)
Phase Resist. 25/80 °C	Ohm	6.2/7.5	6.2/7.5
Phase Inductance	mH	3.1	3.1
Thermal Resistance	°K/W	3.6	3.6
Thermal Time Const.	sec	2900	2900
Stator Diameter	mm (in)	37 (1.46)	37 (1.46)
Stator Length	mm (in)	216 (8.50)	227 (8.94)
Stator Mass	g (lb)	740 (1.63)	740 (1.63)
Slider Diameter	mm (in)	20 (0.79)	20 (0.79)
Slider Length	mm (in)	500 (19.69)	500 (19.69)
Slider Mass	g (lb)	1064 (2.35)	1064 (2.35)
Position Repeatability	mm (in)	±0.05 (±0.0020)	±0.05 (±0.0020)
Linearity	%	±0.20	±0.20
Repeatability with EPS	mm (in)	±0.01 (±0.0004)	±0.01 (±0.0004)
Linearity with EPS	mm (in)	±0.01 (±0.0004)	±0.01 (±0.0004)

Position-Time Diagram



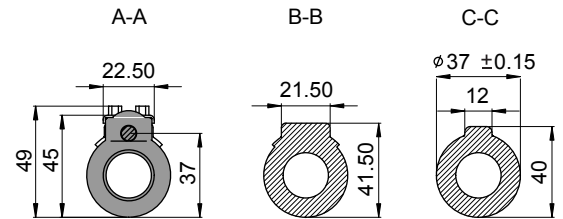
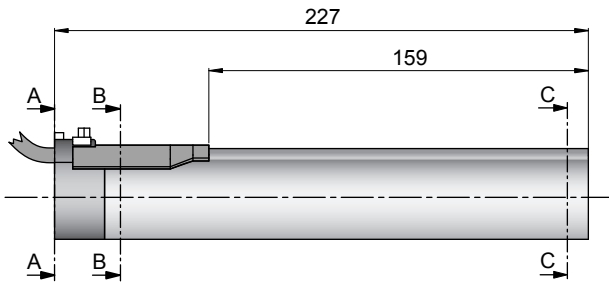
Moving Slider

Connector Type



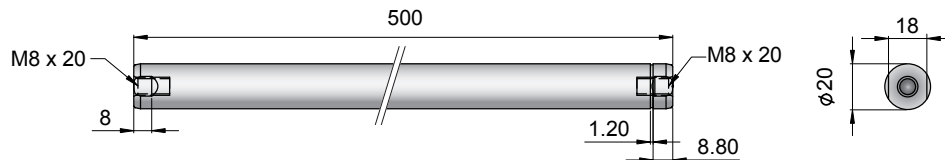
Linear Motor		Stator		Slider	
Type	Art.No	Type	Art. No.	Type	Art. No.
P01-37x120/280x360-C	-->	PS01-37x120-C	0150-1223	& PL01-20x500/420	0150-1328

Cable Type



Linear Motor		Stator		Slider	
Type	Art.No	Type	Art. No.	Type	Art. No.
P01-37x120/280x360-P150	-->	PS01-37x120-P150	0150-1204	& PL01-20x500/420	0150-1328
P01-37x120/280x360-C20	-->	PS01-37x120-C20	0150-1237	& PL01-20x500/420	0150-1328

Slider



Standard Type	Slider Standard	PL01-20x500/420	0150-1328
Special Sliders	Heavy Duty Slider with WC/C-Coating	PL02-20x500/420	0150-1329
	Hollow Slider hole diameter 6.5mm	PL01-20x500/420-L	0150-1358
	High Clearance Slider d=19mm, m=960g	PL01-19x500/420	0150-1455

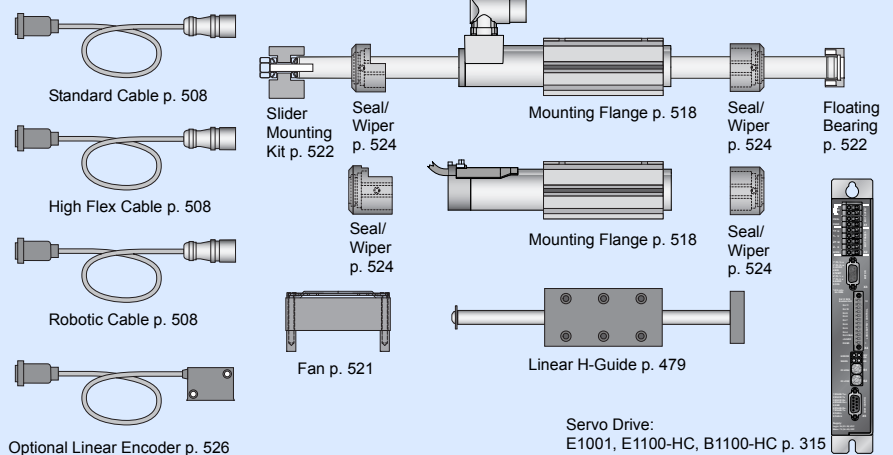
Connectors

Motor Connector Wiring

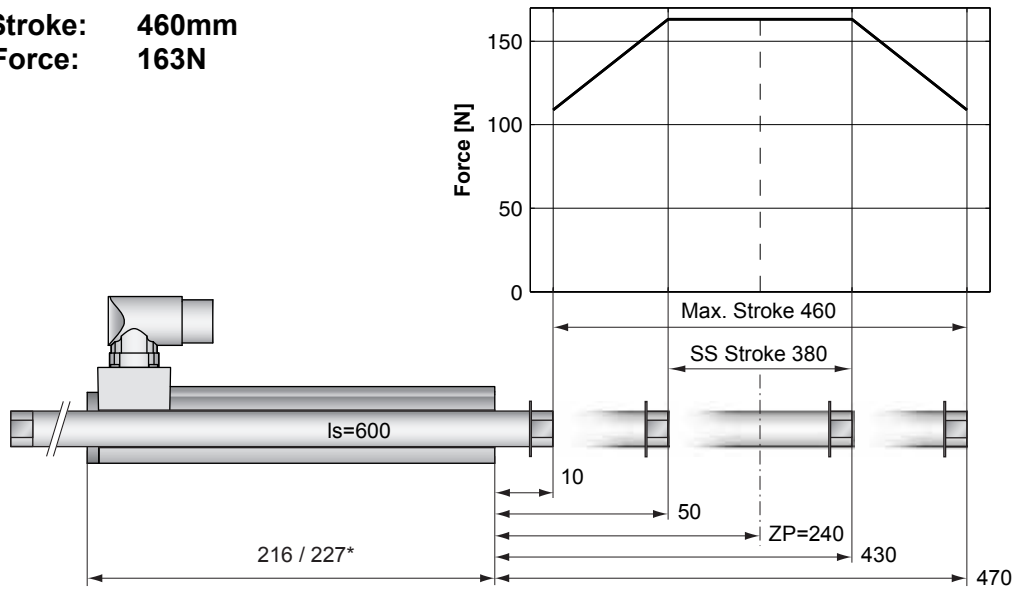
Cable Length:
P01-37x120... 1.5m
P01-37x120...-C20 0.2m

		P01-37...-C P01-37...-C20	P01-37...
Ph 1+	red	A	1
Ph 1-	pink	B	2
Ph 2+	blue	C	3
Ph 2-	grey	D	4
+5VDC	white	E	5
GND	inner Shield	F	6
Sine	yellow	G	7
Cosine	green	H	8
Temp.	black	L	9
Shield	outer Shield	Case	10

Accessoires



Max. Stroke: 460mm
Peak Force: 163N

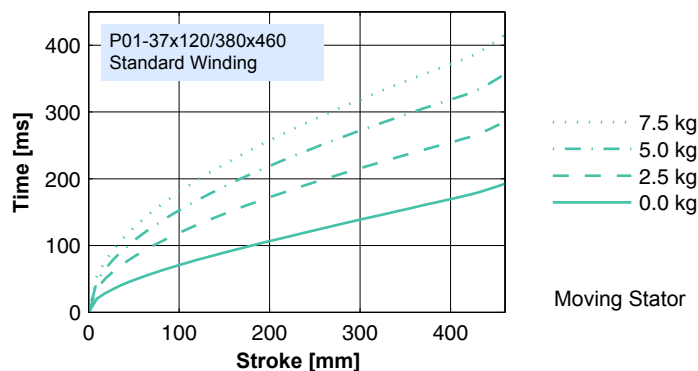


Dimensions in mm
 *Cable Type

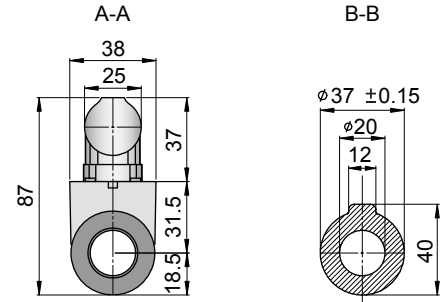
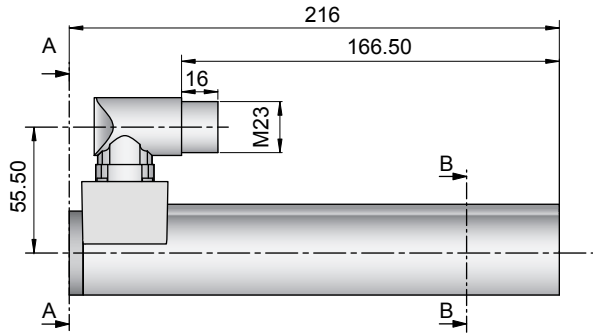
Motor Specification

	P01-	Connector Type	Cable Type
		37x120/380x460-C	37x120/380x460-P150 37x120/380x460-C20
Extended Stroke ES	mm (in)	460 (18.11)	460 (18.11)
Standard Stroke SS	mm (in)	380 (14.96)	380 (14.96)
Peak Force E1100-HC	N (lbf)	163 (36.7)	163 (36.7)
Peak Force E1100 / E1001	N (lbf)	163 (36.7)	163 (36.7)
Cont. Force	N (lbf)	29 (6.5)	29 (6.5)
Cont. Force Fan cooling	N (lbf)	54 (12.2)	54 (12.2)
Border Force	%	67	67
Force Constant	N/A (lbf/A)	20.4 (4.59)	20.4 (4.59)
Max. Current @ 72VDC	A	8.0	8.0
Max. Current @ 48VDC	A	6.3	6.3
Max. Velocity @ 72VDC	m/s (in/s)	3.2 (128)	3.2 (128)
Max. Velocity @ 48VDC	m/s (in/s)	2.2 (85)	2.2 (85)
Phase Resist. 25/80 °C	Ohm	6.2/7.5	6.2/7.5
Phase Inductance	mH	3.1	3.1
Thermal Resistance	°K/W	3.6	3.6
Thermal Time Const.	sec	2900	2900
Stator Diameter	mm (in)	37 (1.46)	37 (1.46)
Stator Length	mm (in)	216 (8.50)	227 (8.94)
Stator Mass	g (lb)	740 (1.63)	740 (1.63)
Slider Diameter	mm (in)	20 (0.79)	20 (0.79)
Slider Length	mm (in)	600 (23.62)	600 (23.62)
Slider Mass	g (lb)	1297 (2.86)	1297 (2.86)
Position Repeatability	mm (in)	±0.05 (±0.0020)	±0.05 (±0.0020)
Linearity	%	±0.15	±0.15
Repeatability with EPS	mm (in)	±0.01 (±0.0004)	±0.01 (±0.0004)
Linearity with EPS	mm (in)	±0.01 (±0.0004)	±0.01 (±0.0004)

Position-Time Diagram

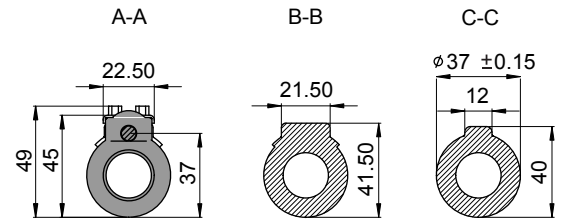
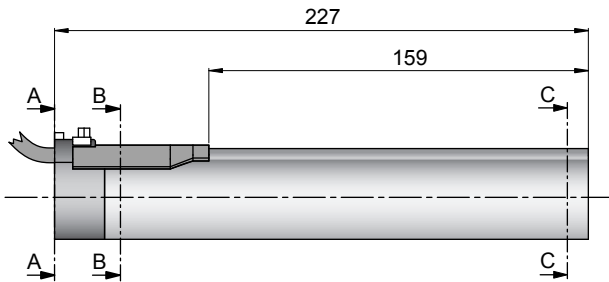


Connector Type



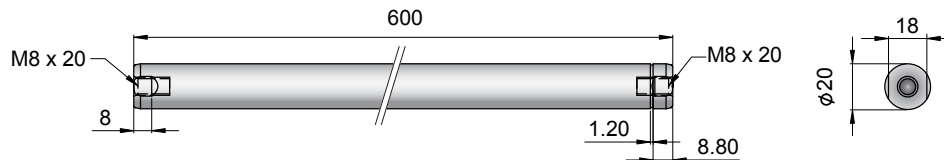
Linear Motor		Stator		Slider	
Type	Art.No	Type	Art. No.	Type	Art. No.
P01-37x120/380x460-C	-->	PS01-37x120-C	0150-1223	& PL01-20x600/520	0150-1330

Cable Type



Linear Motor		Stator		Slider	
Type	Art.No	Type	Art. No.	Type	Art. No.
P01-37x120/380x460-P150	-->	PS01-37x120-P150	0150-1204	& PL01-20x600/520	0150-1330
P01-37x120/380x460-C20	-->	PS01-37x120-C20	0150-1237	& PL01-20x600/520	0150-1330

Slider



Standard Type	Slider Standard	PL01-20x600/520	0150-1330
Special Sliders	Heavy Duty Slider with WC/C-Coating	PL02-20x600/520	0150-1331
	Hollow Slider hole diameter 6.5mm	PL01-20x600/520-L	0150-1359
	High Clearance Slider d=19mm, m=1171g	PL01-19x600/520	0150-1456

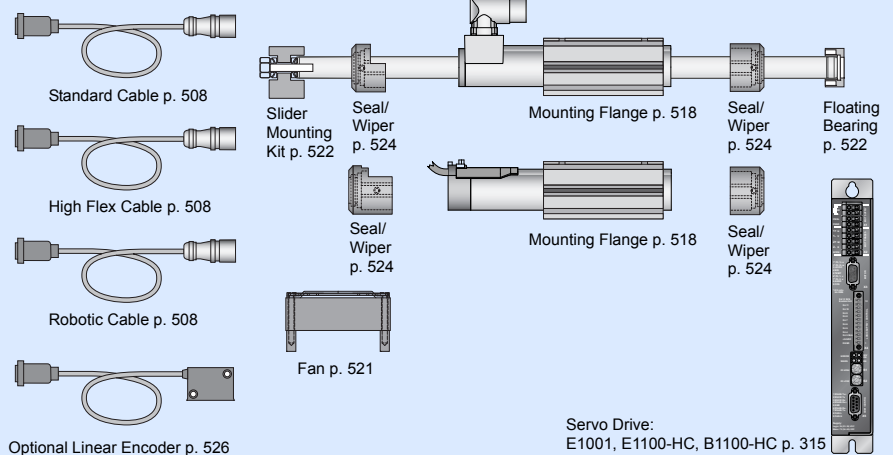
Connectors

Motor Connector Wiring

Cable Length:
P01-37x120... 1.5m
P01-37x120...-C20 0.2m

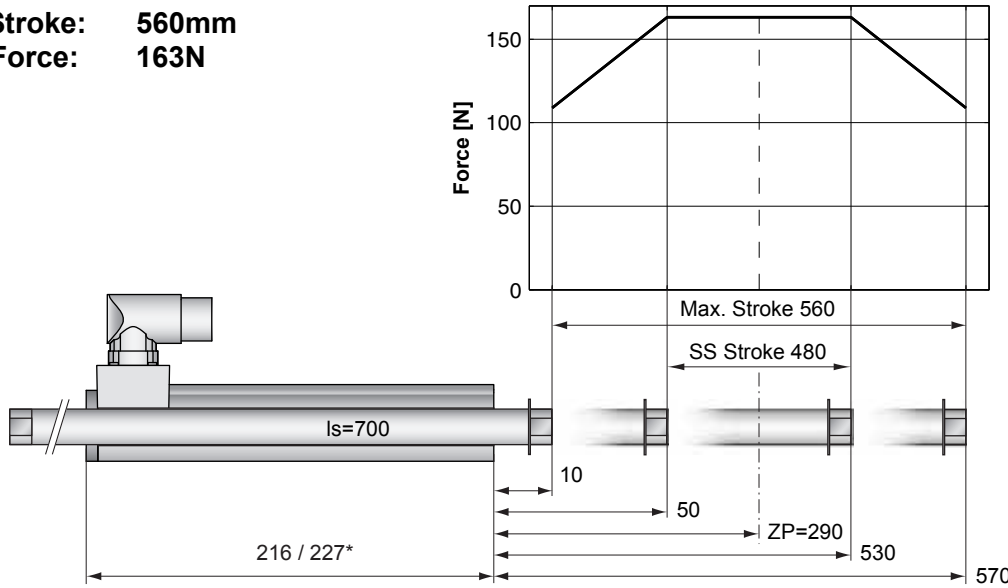
		P01-37...-C P01-37...-C20	P01-37...
Ph 1+	red	A	1
Ph 1-	pink	B	2
Ph 2+	blue	C	3
Ph 2-	grey	D	4
+5VDC	white	E	5
GND	inner Shield	F	6
Sine	yellow	G	7
Cosine	green	H	8
Temp.	black	L	9
Shield	outer Shield	Case	10

Accessoires



Servo Drive:
E1001, E1100-HC, B1100-HC p. 315

Max. Stroke: 560mm
Peak Force: 163N

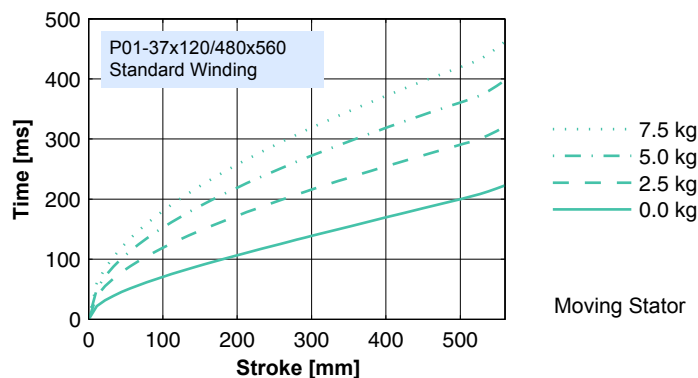


Dimensions in mm
 *Cable Type

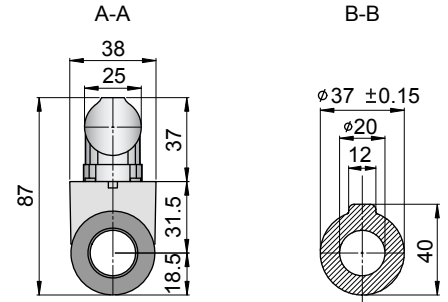
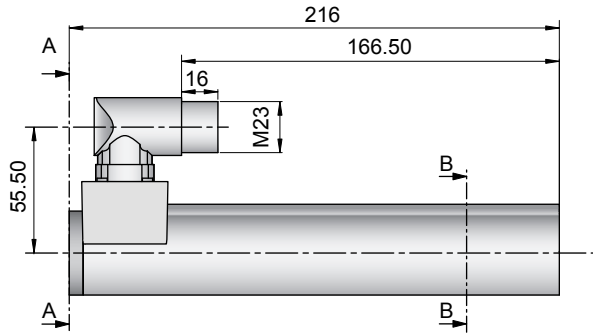
Motor Specification

	P01-	Connector Type	Cable Type
		37x120/480x560-C	37x120/480x560-P150 37x120/480x560-C20
Extended Stroke ES	mm (in)	560 (22.05)	560 (22.05)
Standard Stroke SS	mm (in)	480 (18.90)	480 (18.90)
Peak Force E1100-HC	N (lbf)	163 (36.7)	163 (36.7)
Peak Force E1100 / E1001	N (lbf)	163 (36.7)	163 (36.7)
Cont. Force	N (lbf)	29 (6.5)	29 (6.5)
Cont. Force Fan cooling	N (lbf)	54 (12.2)	54 (12.2)
Border Force	%	67	67
Force Constant	N/A (lbf/A)	20.4 (4.59)	20.4 (4.59)
Max. Current @ 72VDC	A	8.0	8.0
Max. Current @ 48VDC	A	6.3	6.3
Max. Velocity @ 72VDC	m/s (in/s)	3.2 (128)	3.2 (128)
Max. Velocity @ 48VDC	m/s (in/s)	2.2 (85)	2.2 (85)
Phase Resist. 25/80 °C	Ohm	6.2/7.5	6.2/7.5
Phase Inductance	mH	3.1	3.1
Thermal Resistance	°K/W	3.6	3.6
Thermal Time Const.	sec	2900	2900
Stator Diameter	mm (in)	37 (1.46)	37 (1.46)
Stator Length	mm (in)	216 (8.50)	227 (8.94)
Stator Mass	g (lb)	740 (1.63)	740 (1.63)
Slider Diameter	mm (in)	20 (0.79)	20 (0.79)
Slider Length	mm (in)	700 (27.56)	700 (27.56)
Slider Mass	g (lb)	1529 (3.37)	1529 (3.37)
Position Repeatability	mm (in)	±0.05 (±0.0020)	±0.05 (±0.0020)
Linearity	%	±0.15	±0.15
Repeatability with EPS	mm (in)	±0.01 (±0.0004)	±0.01 (±0.0004)
Linearity with EPS	mm (in)	±0.01 (±0.0004)	±0.01 (±0.0004)

Position-Time Diagram

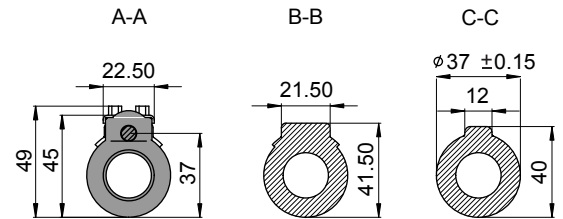
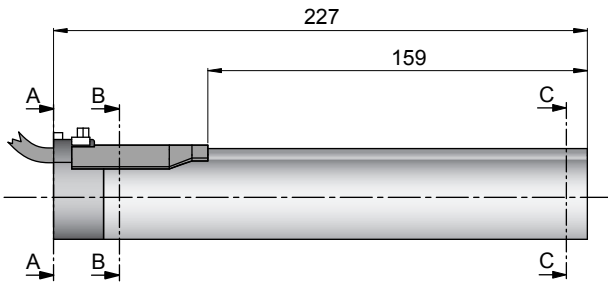


Connector Type



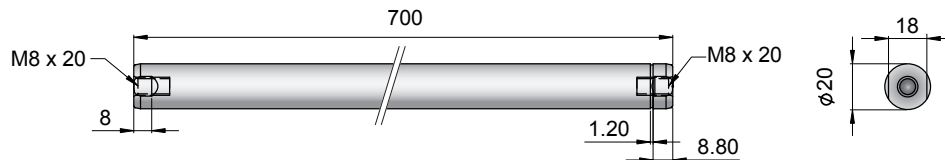
Linear Motor		Stator		Slider	
Type	Art.No	Type	Art. No.	Type	Art. No.
P01-37x120/480x560-C	-->	PS01-37x120-C	0150-1223	& PL01-20x700/620	0150-1332

Cable Type



Linear Motor		Stator		Slider	
Type	Art.No	Type	Art. No.	Type	Art. No.
P01-37x120/480x560-P150	-->	PS01-37x120-P150	0150-1204	& PL01-20x700/620	0150-1332
P01-37x120/480x560-C20	-->	PS01-37x120-C20	0150-1237	& PL01-20x700/620	0150-1332

Slider



Standard Type	Slider Standard	PL01-20x700/620	0150-1332
Special Sliders	Heavy Duty Slider with WC/C-Coating	PL02-20x700/620	0150-1333
	Hollow Slider hole diameter 6.5mm	PL01-20x700/620-L	0150-1360
	High Clearance Slider d=19mm, m=1380g	PL01-19x700/620	0150-1457

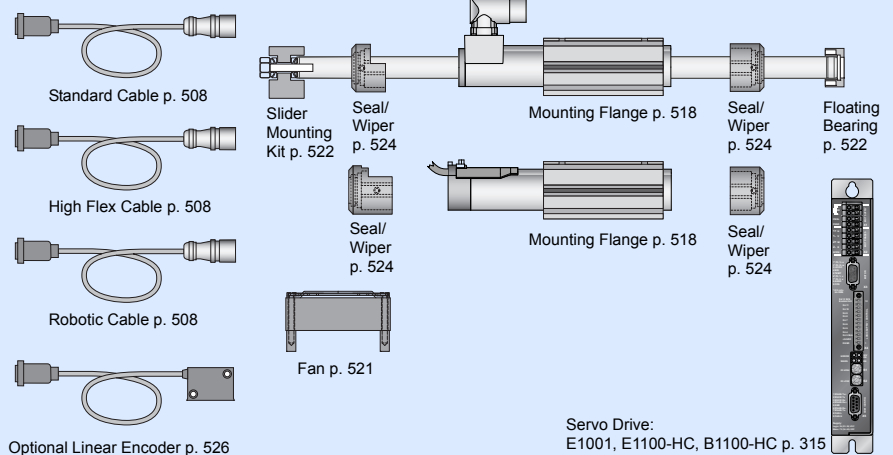
Connectors

Motor Connector Wiring

Cable Length:
P01-37x120... 1.5m
P01-37x120...-C20 0.2m

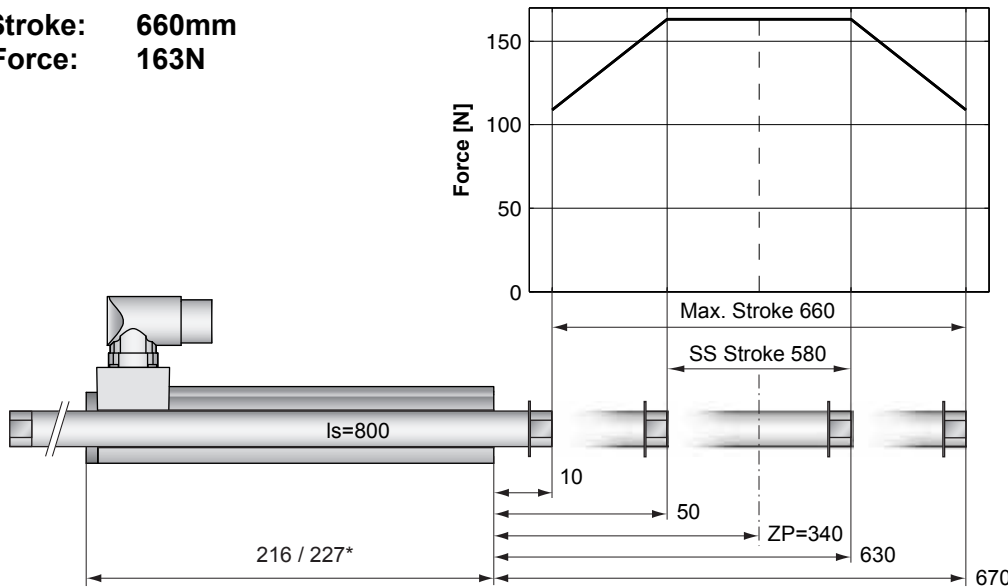
		P01-37...-C P01-37...-C20	P01-37...
Ph 1+	red	A	1
Ph 1-	pink	B	2
Ph 2+	blue	C	3
Ph 2-	grey	D	4
+5VDC	white	E	5
GND	inner Shield	F	6
Sine	yellow	G	7
Cosine	green	H	8
Temp.	black	L	9
Shield	outer Shield	Case	10

Accessoires



Servo Drive:
E1001, E1100-HC, B1100-HC p. 315

Max. Stroke: 660mm
Peak Force: 163N



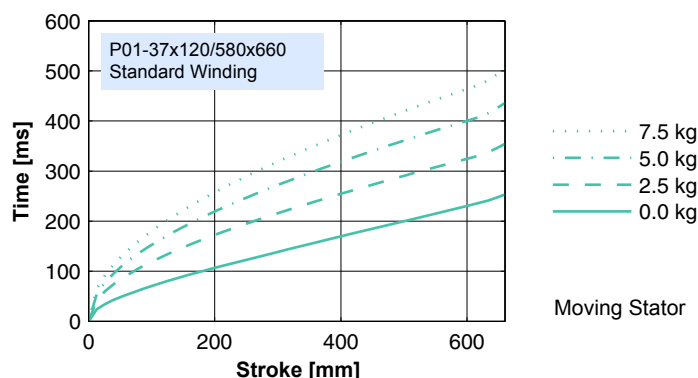
Standard Winding:
 — E1100-HC, 72VDC
 — E1100, 72VDC & E1001, 72VDC

Dimensions in mm
 *Cable Type

Motor Specification

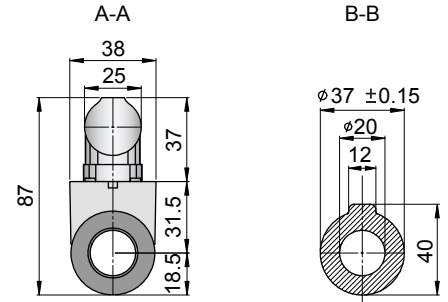
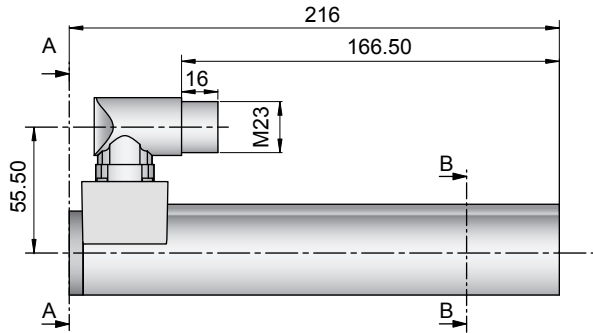
P01-		Connector Type	Cable Type
		37x120/580x660-C	37x120/580x660-P150 37x120/580x660-C20
Extended Stroke ES	mm (in)	660 (25.98)	660 (25.98)
Standard Stroke SS	mm (in)	580 (22.83)	580 (22.83)
Peak Force E1100-HC	N (lbf)	163 (36.7)	163 (36.7)
Peak Force E1100 / E1001	N (lbf)	163 (36.7)	163 (36.7)
Cont. Force	N (lbf)	29 (6.5)	29 (6.5)
Cont. Force Fan cooling	N (lbf)	54 (12.2)	54 (12.2)
Border Force	%	67	67
Force Constant	N/A (lbf/A)	20.4 (4.59)	20.4 (4.59)
Max. Current @ 72VDC	A	8.0	8.0
Max. Current @ 48VDC	A	6.3	6.3
Max. Velocity @ 72VDC	m/s (in/s)	3.2 (128)	3.2 (128)
Max. Velocity @ 48VDC	m/s (in/s)	2.2 (85)	2.2 (85)
Phase Resist. 25/80 °C	Ohm	6.2/7.5	6.2/7.5
Phase Inductance	mH	3.1	3.1
Thermal Resistance	°K/W	3.6	3.6
Thermal Time Const.	sec	2900	2900
Stator Diameter	mm (in)	37 (1.46)	37 (1.46)
Stator Length	mm (in)	216 (8.50)	227 (8.94)
Stator Mass	g (lb)	740 (1.63)	740 (1.63)
Slider Diameter	mm (in)	20 (0.79)	20 (0.79)
Slider Length	mm (in)	800 (31.50)	800 (31.50)
Slider Mass	g (lb)	1762 (3.88)	1762 (3.88)
Position Repeatability	mm (in)	±0.05 (±0.0020)	±0.05 (±0.0020)
Linearity	%	±0.15	±0.15
Repeatability with EPS	mm (in)	±0.01 (±0.0004)	±0.01 (±0.0004)
Linearity with EPS	mm (in)	±0.01 (±0.0004)	±0.01 (±0.0004)

Position-Time Diagram



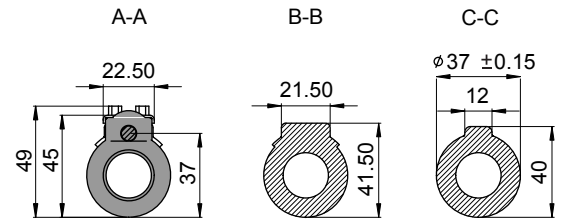
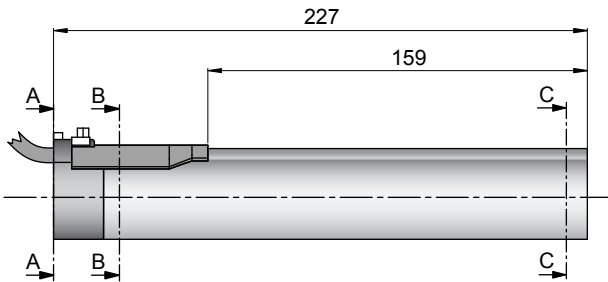
Moving Stator

Connector Type



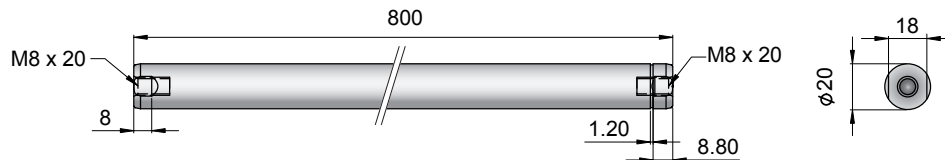
Linear Motor		Stator		Slider	
Type	Art.No	Type	Art. No.	Type	Art. No.
P01-37x120/580x660-C	-->	PS01-37x120-C	0150-1223	& PL01-20x800/720	0150-1334

Cable Type



Linear Motor		Stator		Slider	
Type	Art.No	Type	Art. No.	Type	Art. No.
P01-37x120/580x660-P150	-->	PS01-37x120-P150	0150-1204	& PL01-20x800/720	0150-1334
P01-37x120/580x660-C20	-->	PS01-37x120-C20	0150-1237	& PL01-20x800/720	0150-1334

Slider



Standard Type	Slider Standard	PL01-20x800/720	0150-1334
Special Sliders	Heavy Duty Slider with WC/C-Coating	PL02-20x800/720	0150-1335
	Hollow Slider hole diameter 6.5mm	PL01-20x800/720-L	0150-1361
	High Clearance Slider d=19mm, m=1590g	PL01-19x800/720	0150-1458

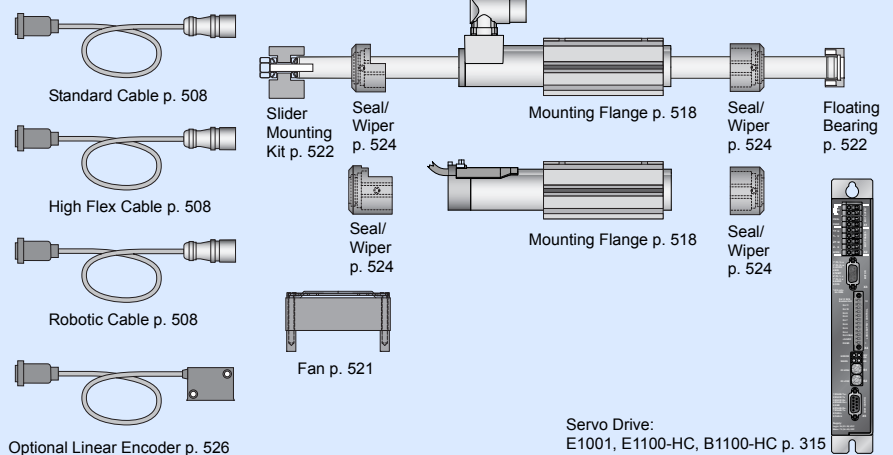
Connectors

Motor Connector Wiring

Cable Length:
P01-37x120... 1.5m
P01-37x120...-C20 0.2m

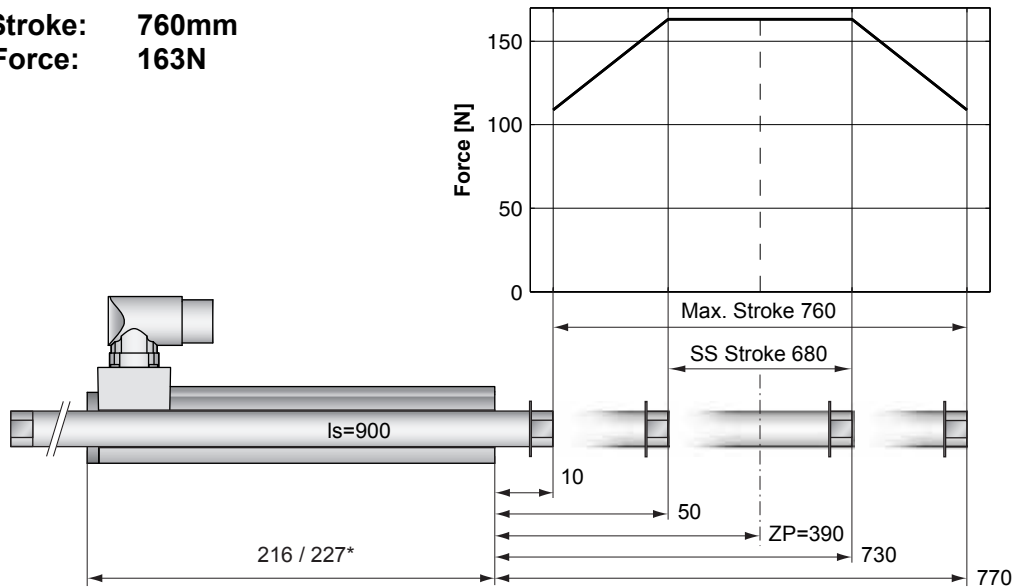
		P01-37...-C P01-37...-C20	P01-37...-C
Ph 1+	red	A	1
Ph 1-	pink	B	2
Ph 2+	blue	C	3
Ph 2-	grey	D	4
+5VDC	white	E	5
GND	inner Shield	F	6
Sine	yellow	G	7
Cosine	green	H	8
Temp.	black	L	9
Shield	outer Shield	Case	10

Accessoires



Servo Drive:
E1001, E1100-HC, B1100-HC p. 315

Max. Stroke: 760mm
Peak Force: 163N

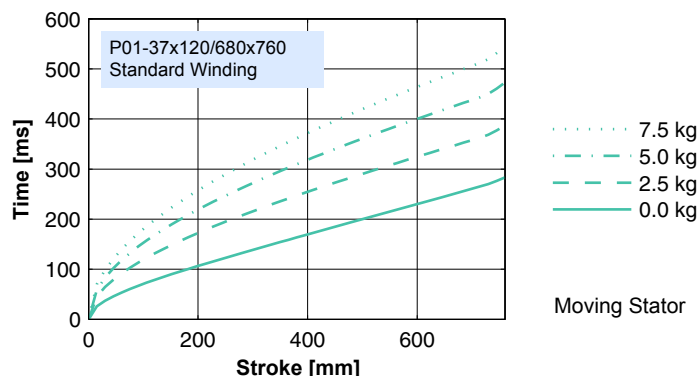


Dimensions in mm
 *Cable Type

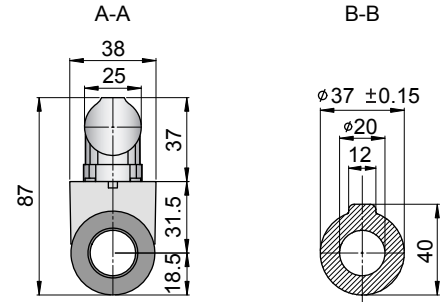
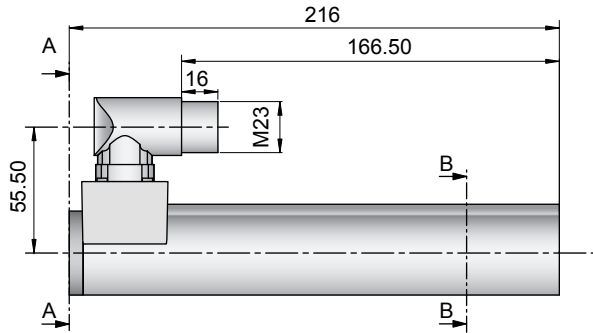
Motor Specification

	P01-	Connector Type	Cable Type
		37x120/680x760-C	37x120/680x760-P150 37x120/680x760-C20
Extended Stroke ES	mm (in)	760 (29.92)	760 (29.92)
Standard Stroke SS	mm (in)	680 (26.77)	680 (26.77)
Peak Force E1100-HC	N (lbf)	163 (36.7)	163 (36.7)
Peak Force E1100 / E1001	N (lbf)	163 (36.7)	163 (36.7)
Cont. Force	N (lbf)	29 (6.5)	29 (6.5)
Cont. Force Fan cooling	N (lbf)	54 (12.2)	54 (12.2)
Border Force	%	67	67
Force Constant	N/A (lbf/A)	20.4 (4.59)	20.4 (4.59)
Max. Current @ 72VDC	A	8.0	8.0
Max. Current @ 48VDC	A	6.3	6.3
Max. Velocity @ 72VDC	m/s (in/s)	3.2 (128)	3.2 (128)
Max. Velocity @ 48VDC	m/s (in/s)	2.2 (85)	2.2 (85)
Phase Resist. 25/80 °C	Ohm	6.2/7.5	6.2/7.5
Phase Inductance	mH	3.1	3.1
Thermal Resistance	°K/W	3.6	3.6
Thermal Time Const.	sec	2900	2900
Stator Diameter	mm (in)	37 (1.46)	37 (1.46)
Stator Length	mm (in)	216 (8.50)	227 (8.94)
Stator Mass	g (lb)	740 (1.63)	740 (1.63)
Slider Diameter	mm (in)	20 (0.79)	20 (0.79)
Slider Length	mm (in)	900 (35.43)	900 (35.43)
Slider Mass	g (lb)	1994 (4.40)	1994 (4.40)
Position Repeatability	mm (in)	±0.05 (±0.0020)	±0.05 (±0.0020)
Linearity	%	±0.15	±0.15
Repeatability with EPS	mm (in)	±0.01 (±0.0004)	±0.01 (±0.0004)
Linearity with EPS	mm (in)	±0.01 (±0.0004)	±0.01 (±0.0004)

Position-Time Diagram

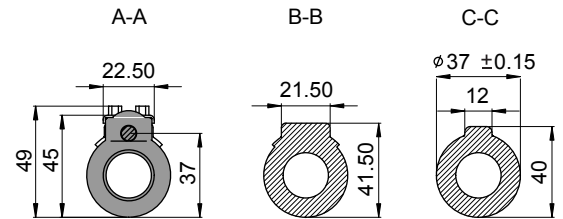
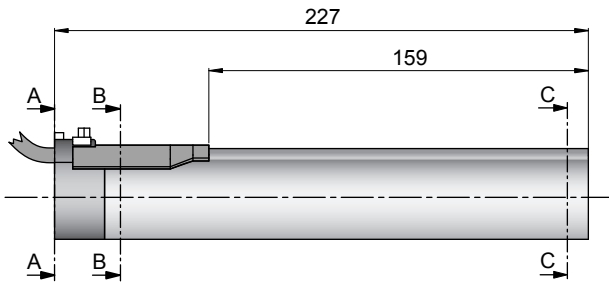


Connector Type



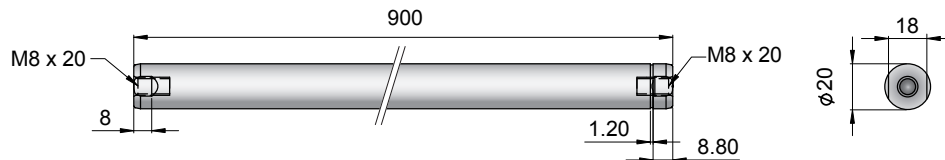
Linear Motor		Stator		Slider	
Type	Art.No	Type	Art. No.	Type	Art. No.
P01-37x120/680x760-C	-->	PS01-37x120-C	0150-1223	& PL01-20x900/820	0150-1336

Cable Type



Linear Motor		Stator		Slider	
Type	Art.No	Type	Art. No.	Type	Art. No.
P01-37x120/680x760-P150	-->	PS01-37x120-P150	0150-1204	& PL01-20x900/820	0150-1336
P01-37x120/680x760-C20	-->	PS01-37x120-C20	0150-1237	& PL01-20x900/820	0150-1336

Slider



Standard Type	Slider Standard	PL01-20x900/820	0150-1336
Special Sliders	Heavy Duty Slider with WC/C-Coating	PL02-20x900/820	0150-1337
	Hollow Slider hole diameter 6.5mm	PL01-20x900/820-L	0150-1362
	High Clearance Slider d=19mm	PL01-19x900/820	on request

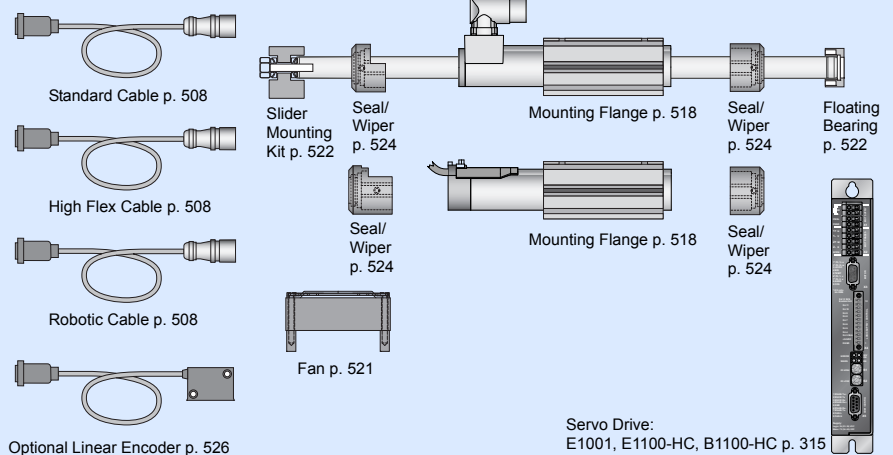
Connectors

Motor Connector Wiring

Cable Length:
P01-37x120... 1.5m
P01-37x120...-C20 0.2m

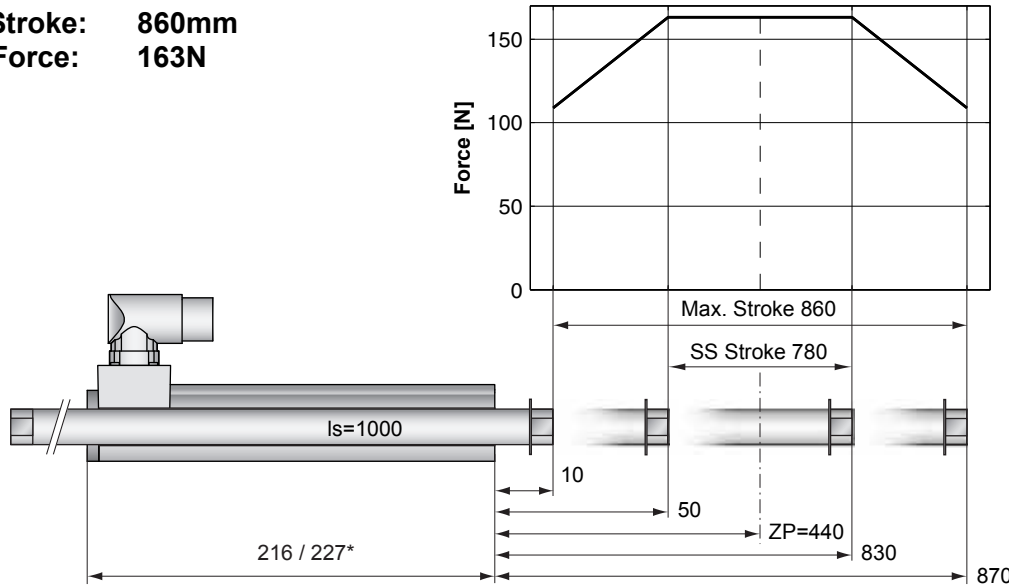
Wire Color	Phase	Terminal	Order
Ph 1+	red	A	1
Ph 1-	pink	B	2
Ph 2+	blue	C	3
Ph 2-	grey	D	4
+5VDC	white	E	5
GND	inner Shield	F	6
Sine	yellow	G	7
Cosine	green	H	8
Temp.	black	L	9
Shield	outer Shield	Case	10

Accessoires



Servo Drive:
E1001, E1100-HC, B1100-HC p. 315

Max. Stroke: 860mm
Peak Force: 163N



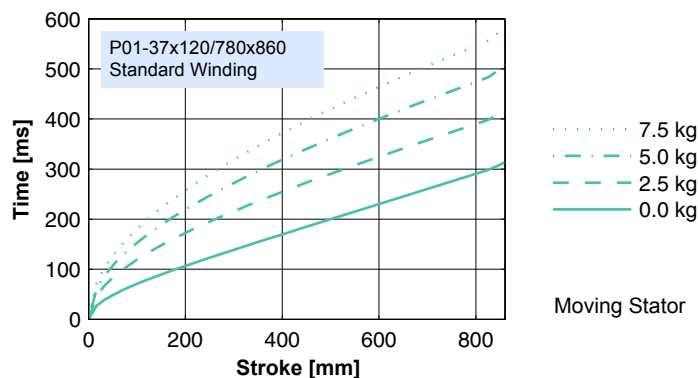
Standard Winding:
 — E1100-HC, 72VDC
 — E1100, 72VDC & E1001, 72VDC

Dimensions in mm
 *Cable Type

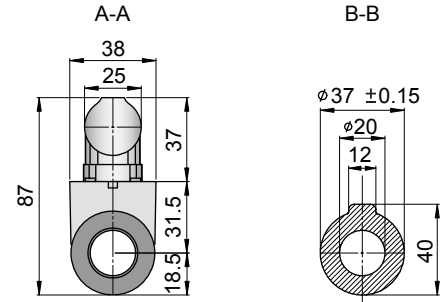
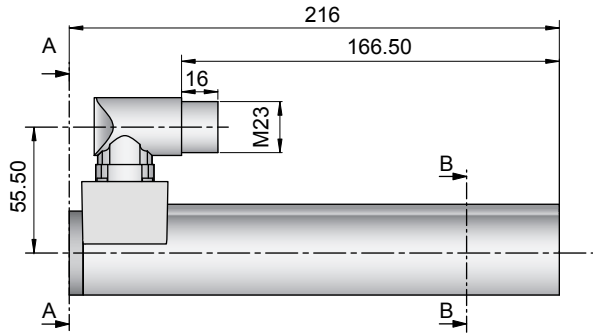
Motor Specification

	P01-	Connector Type	Cable Type
		37x120/780x860-C	37x120/780x860-P150 37x120/780x860-C20
Extended Stroke ES	mm (in)	860 (33.86)	860 (33.86)
Standard Stroke SS	mm (in)	780 (30.71)	780 (30.71)
Peak Force E1100-HC	N (lbf)	163 (36.7)	163 (36.7)
Peak Force E1100 / E1001	N (lbf)	163 (36.7)	163 (36.7)
Cont. Force	N (lbf)	29 (6.5)	29 (6.5)
Cont. Force Fan cooling	N (lbf)	54 (12.2)	54 (12.2)
Border Force	%	67	67
Force Constant	N/A (lbf/A)	20.4 (4.59)	20.4 (4.59)
Max. Current @ 72VDC	A	8.0	8.0
Max. Current @ 48VDC	A	6.3	6.3
Max. Velocity @ 72VDC	m/s (in/s)	3.2 (128)	3.2 (128)
Max. Velocity @ 48VDC	m/s (in/s)	2.2 (85)	2.2 (85)
Phase Resist. 25/80 °C	Ohm	6.2/7.5	6.2/7.5
Phase Inductance	mH	3.1	3.1
Thermal Resistance	°K/W	3.6	3.6
Thermal Time Const.	sec	2900	2900
Stator Diameter	mm (in)	37 (1.46)	37 (1.46)
Stator Length	mm (in)	216 (8.50)	227 (8.94)
Stator Mass	g (lb)	740 (1.63)	740 (1.63)
Slider Diameter	mm (in)	20 (0.79)	20 (0.79)
Slider Length	mm (in)	1000 (39.37)	1000 (39.37)
Slider Mass	g (lb)	2227 (4.91)	2227 (4.91)
Position Repeatability	mm (in)	±0.05 (±0.0020)	±0.05 (±0.0020)
Linearity	%	±0.15	±0.15
Repeatability with EPS	mm (in)	±0.01 (±0.0004)	±0.01 (±0.0004)
Linearity with EPS	mm (in)	±0.01 (±0.0004)	±0.01 (±0.0004)

Position-Time Diagram

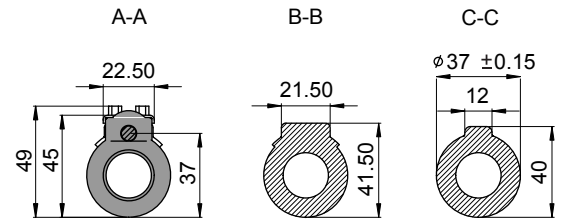
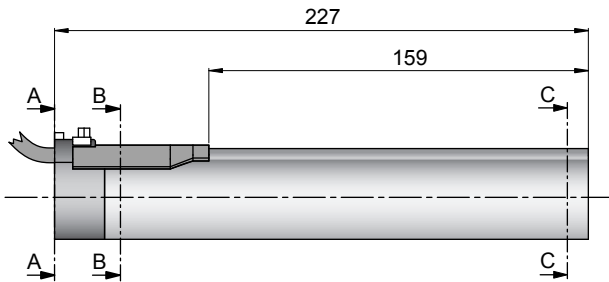


Connector Type



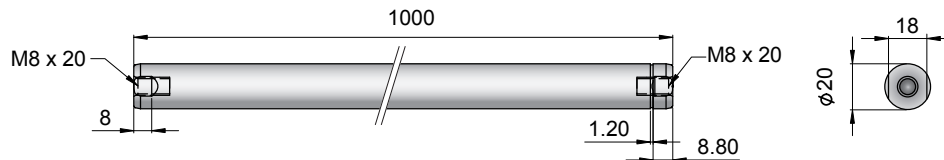
Linear Motor		Stator		Slider	
Type	Art.No	Type	Art. No.	Type	Art. No.
P01-37x120/780x860-C	-->	PS01-37x120-C	0150-1223	& PL01-20x1000/920	0150-1338

Cable Type



Linear Motor		Stator		Slider	
Type	Art.No	Type	Art. No.	Type	Art. No.
P01-37x120/780x860-P150	-->	PS01-37x120-P150	0150-1204	& PL01-20x1000/920	0150-1338
P01-37x120/780x860-C20	-->	PS01-37x120-C20	0150-1237	& PL01-20x1000/920	0150-1338

Slider



Standard Type	Slider Standard	PL01-20x1000/920	0150-1338
Special Sliders	Heavy Duty Slider with WC/C-Coating	PL02-20x1000/920	on request
	Hollow Slider hole diameter 6.5mm	PL01-20x1000/920-L	0150-1364
	High Clearance Slider d=19mm	PL01-19x1000/920	on request

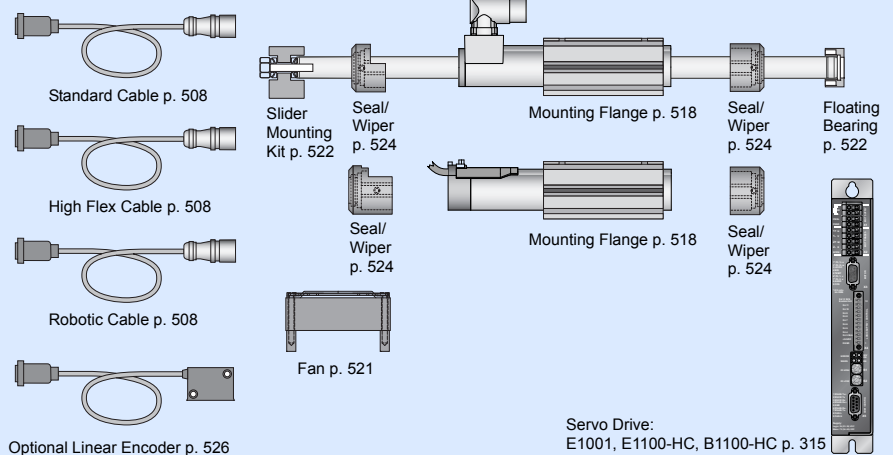
Connectors

Motor Connector Wiring

Cable Length:
P01-37x120... 1.5m
P01-37x120...-C20 0.2m

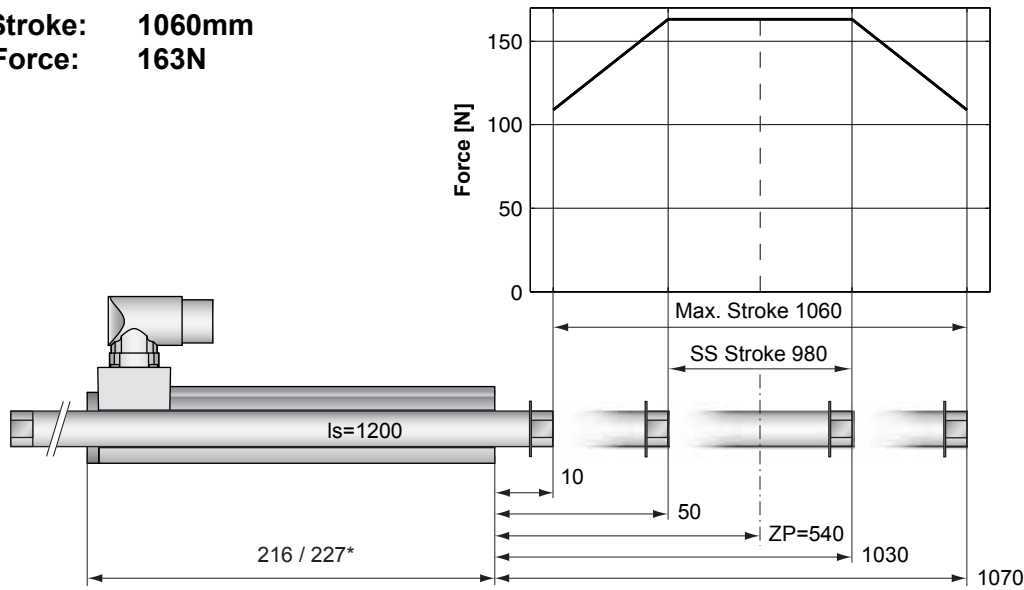
		P01-37...-C P01-37...-C20	P01-37...
Ph 1+	red	A	1
Ph 1-	pink	B	2
Ph 2+	blue	C	3
Ph 2-	grey	D	4
+5VDC	white	E	5
GND	inner Shield	F	6
Sine	yellow	G	7
Cosine	green	H	8
Temp.	black	L	9
Shield	outer Shield	Case	10

Accessoires



Servo Drive:
E1001, E1100-HC, B1100-HC p. 315

Max. Stroke: 1060mm
Peak Force: 163N



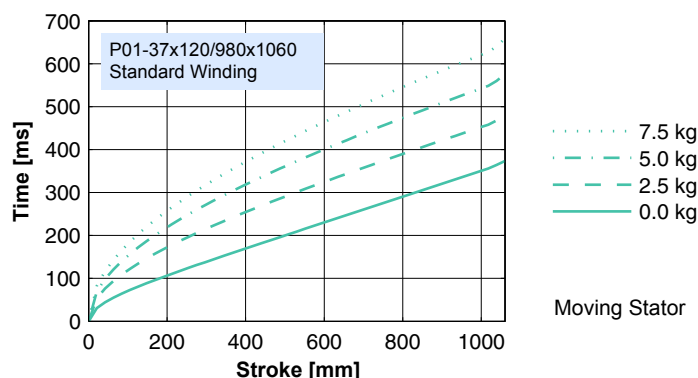
Standard Winding:
 — E1100-HC, 72VDC
 — E1100, 72VDC & E1001, 72VDC

Dimensions in mm
 *Cable Type

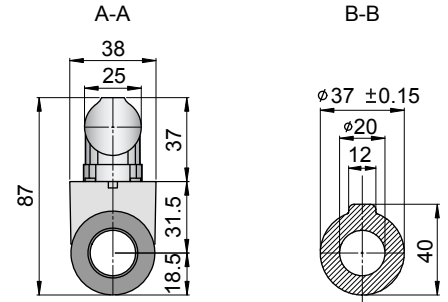
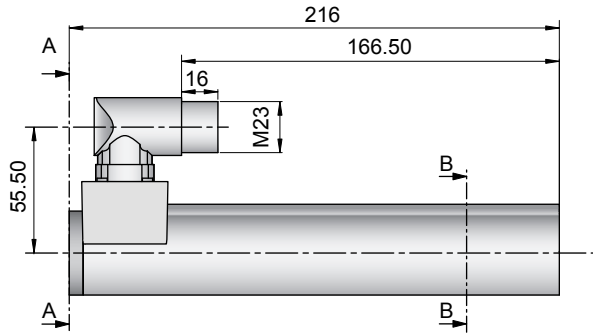
Motor Specification

	P01-	Connector Type	Cable Type
		37x120/980x1060-C	37x120/980x1060-P150 37x120/980x1060-C20
Extended Stroke ES	mm (in)	1060 (41.73)	1060 (41.73)
Standard Stroke SS	mm (in)	980 (38.58)	980 (38.58)
Peak Force E1100-HC	N (lbf)	163 (36.7)	163 (36.7)
Peak Force E1100 / E1001	N (lbf)	163 (36.7)	163 (36.7)
Cont. Force	N (lbf)	29 (6.5)	29 (6.5)
Cont. Force Fan cooling	N (lbf)	54 (12.2)	54 (12.2)
Border Force	%	67	67
Force Constant	N/A (lbf/A)	20.4 (4.59)	20.4 (4.59)
Max. Current @ 72VDC	A	8.0	8.0
Max. Current @ 48VDC	A	6.3	6.3
Max. Velocity @ 72VDC	m/s (in/s)	3.2 (128)	3.2 (128)
Max. Velocity @ 48VDC	m/s (in/s)	2.2 (85)	2.2 (85)
Phase Resist. 25/80 °C	Ohm	6.2/7.5	6.2/7.5
Phase Inductance	mH	3.1	3.1
Thermal Resistance	°K/W	3.6	3.6
Thermal Time Const.	sec	2900	2900
Stator Diameter	mm (in)	37 (1.46)	37 (1.46)
Stator Length	mm (in)	216 (8.50)	227 (8.94)
Stator Mass	g (lb)	740 (1.63)	740 (1.63)
Slider Diameter	mm (in)	20 (0.79)	20 (0.79)
Slider Length	mm (in)	1200 (47.24)	1200 (47.24)
Slider Mass	g (lb)	2692 (5.93)	2692 (5.93)
Position Repeatability	mm (in)	±0.05 (±0.0020)	±0.05 (±0.0020)
Linearity	%	±0.10	±0.10
Repeatability with EPS	mm (in)	±0.01 (±0.0004)	±0.01 (±0.0004)
Linearity with EPS	mm (in)	±0.01 (±0.0004)	±0.01 (±0.0004)

Position-Time Diagram

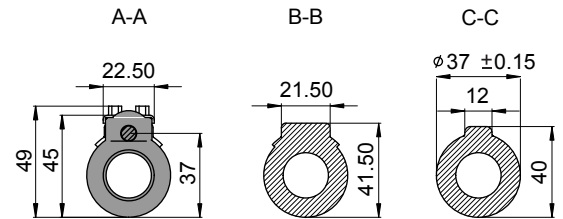
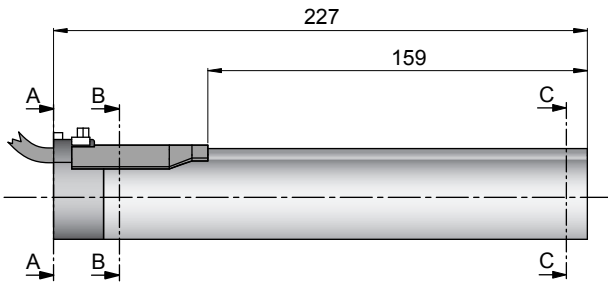


Connector Type



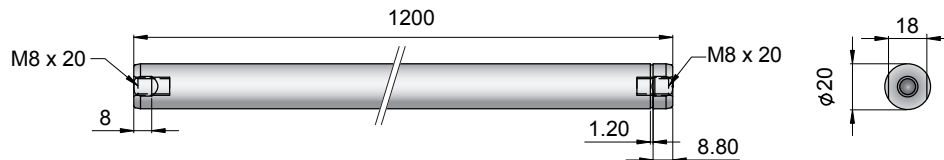
Linear Motor		Stator		Slider	
Type	Art.No	Type	Art. No.	Type	Art. No.
P01-37x120/980x1060-C	-->	PS01-37x120-C	0150-1223	& PL01-20x1200/1120	0150-1340

Cable Type



Linear Motor		Stator		Slider	
Type	Art.No	Type	Art. No.	Type	Art. No.
P01-37x120/980x1060-P150	-->	PS01-37x120-P150	0150-1204	& PL01-20x1200/1120	0150-1340
P01-37x120/980x1060-C20	-->	PS01-37x120-C20	0150-1237	& PL01-20x1200/1120	0150-1340

Slider



Standard Type	Slider Standard	PL01-20x1200/1120	0150-1340
Special Sliders	Heavy Duty Slider with WC/C-Coating	PL02-20x1200/1120	on request
	Hollow Slider hole diameter 6.5mm	PL01-20x1200/1120-L	0150-1376
	High Clearance Slider d=19mm	PL01-19x1200/1120	on request

Connectors

Motor Connector Wiring

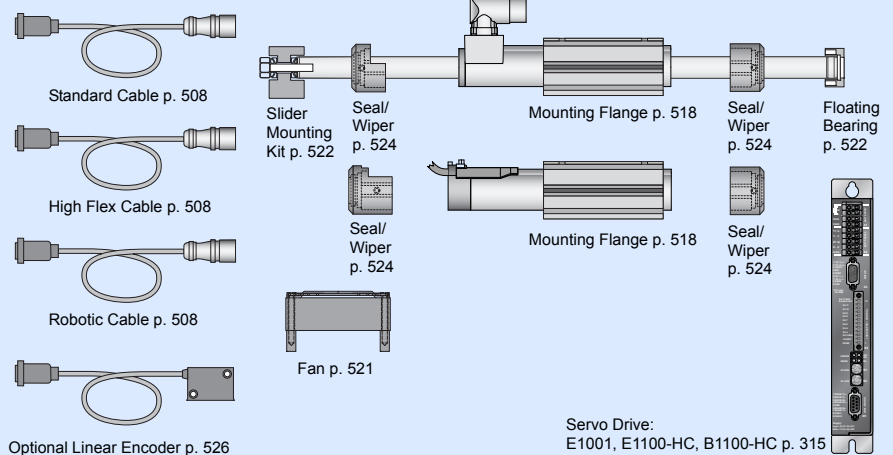
Cable Length:
P01-37x120... 1.5m
P01-37x120...-C20 0.2m

P01-37...-C
P01-37...-C20

P01-37...
P01-37...-C20

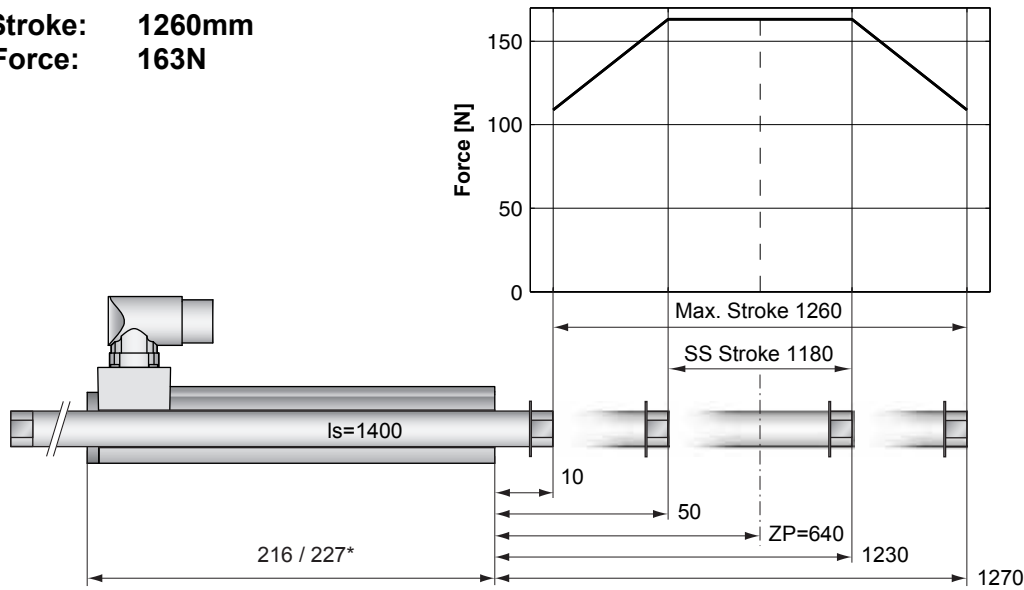
Ph 1+	red	A	1
Ph 1-	pink	B	2
Ph 2+	blue	C	3
Ph 2-	grey	D	4
+5VDC	white	E	5
GND	inner Shield	F	6
Sine	yellow	G	7
Cosine	green	H	8
Temp.	black	L	9
Shield	outer Shield	Case	10

Accessoires



Servo Drive:
E1001, E1100-HC, B1100-HC p. 315

Max. Stroke: 1260mm
Peak Force: 163N

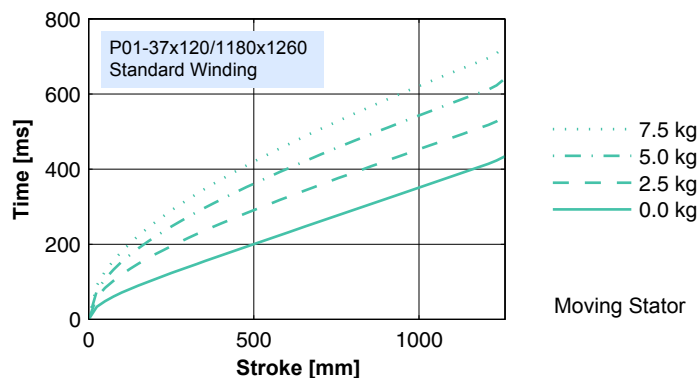


Dimensions in mm
 *Cable Type

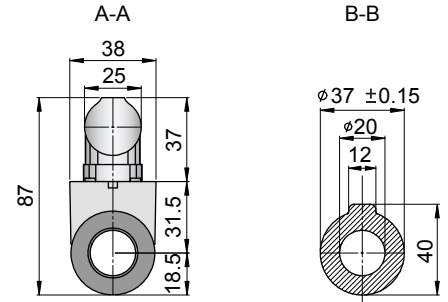
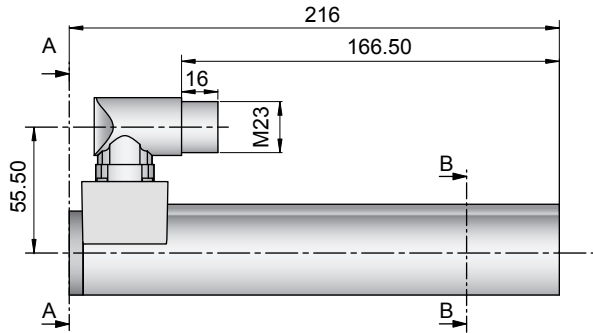
Motor Specification

	P01-	Connector Type	Cable Type
		37x120/1180x1260-C	37x120/1180x1260-P150 37x120/1180x1260-C20
Extended Stroke ES	mm (in)	1260 (49.61)	1260 (49.61)
Standard Stroke SS	mm (in)	1180 (46.46)	1180 (46.46)
Peak Force E1100-HC	N (lbf)	163 (36.7)	163 (36.7)
Peak Force E1100 / E1001	N (lbf)	163 (36.7)	163 (36.7)
Cont. Force	N (lbf)	29 (6.5)	29 (6.5)
Cont. Force Fan cooling	N (lbf)	54 (12.2)	54 (12.2)
Border Force	%	67	67
Force Constant	N/A (lbf/A)	20.4 (4.59)	20.4 (4.59)
Max. Current @ 72VDC	A	8.0	8.0
Max. Current @ 48VDC	A	6.3	6.3
Max. Velocity @ 72VDC	m/s (in/s)	3.2 (128)	3.2 (128)
Max. Velocity @ 48VDC	m/s (in/s)	2.2 (85)	2.2 (85)
Phase Resist. 25/80 °C	Ohm	6.2/7.5	6.2/7.5
Phase Inductance	mH	3.1	3.1
Thermal Resistance	°K/W	3.6	3.6
Thermal Time Const.	sec	2900	2900
Stator Diameter	mm (in)	37 (1.46)	37 (1.46)
Stator Length	mm (in)	216 (8.50)	227 (8.94)
Stator Mass	g (lb)	740 (1.63)	740 (1.63)
Slider Diameter	mm (in)	20 (0.79)	20 (0.79)
Slider Length	mm (in)	1400 (55.12)	1400 (55.12)
Slider Mass	g (lb)	3157 (6.96)	3157 (6.96)
Position Repeatability	mm (in)	±0.05 (±0.0020)	±0.05 (±0.0020)
Linearity	%	±0.10	±0.10
Repeatability with EPS	mm (in)	±0.01 (±0.0004)	±0.01 (±0.0004)
Linearity with EPS	mm (in)	±0.01 (±0.0004)	±0.01 (±0.0004)

Position-Time Diagram

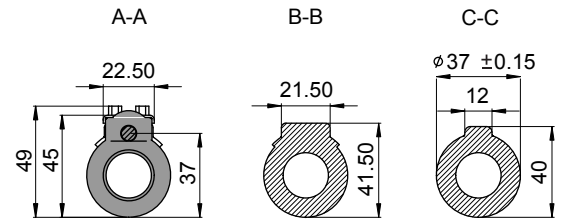
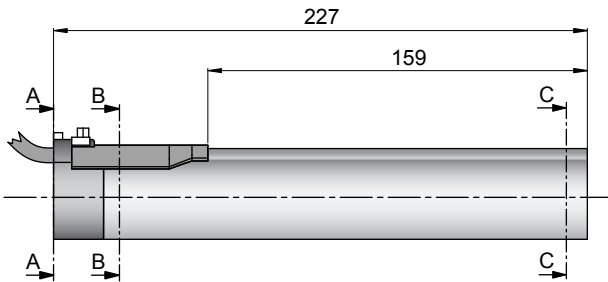


Connector Type



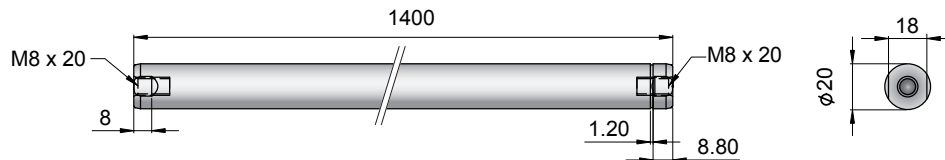
Linear Motor		Stator		Slider	
Type	Art.No	Type	Art. No.	Type	Art. No.
P01-37x120/1180x1260-C	-->	PS01-37x120-C	0150-1223	& PL01-20x1400/1320	0150-1342

Cable Type



Linear Motor		Stator		Slider	
Type	Art.No	Type	Art. No.	Type	Art. No.
P01-37x120/1180x1260-P150	-->	PS01-37x120-P150	0150-1204	& PL01-20x1400/1320	0150-1342
P01-37x120/1180x1260-C20	-->	PS01-37x120-C20	0150-1237	& PL01-20x1400/1320	0150-1342

Slider



Standard Type	Slider Standard	PL01-20x1400/1320	0150-1342
Special Sliders	Heavy Duty Slider with WC/C-Coating	PL02-20x1400/1320	on request
	Hollow Slider hole diameter 6.5mm	PL01-20x1400/1320-L	on request
	High Clearance Slider d=19mm	PL01-19x1400/1320	on request

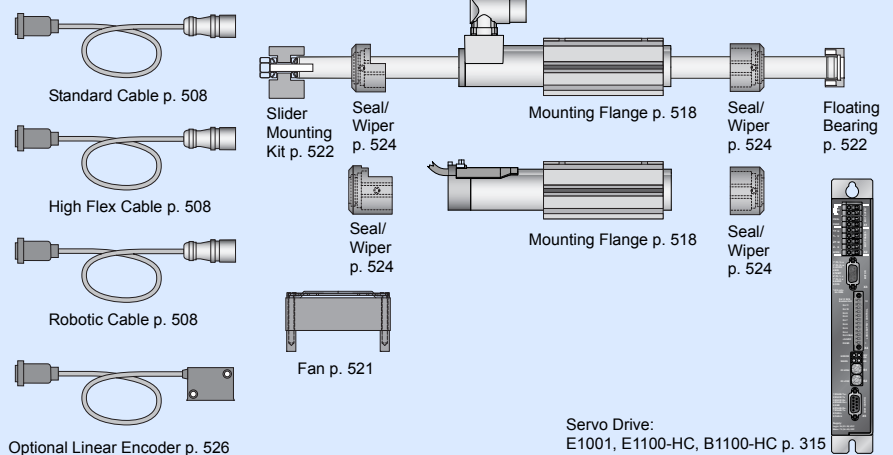
Connectors

Motor Connector Wiring

Cable Length:
P01-37x120... 1.5m
P01-37x120...-C20 0.2m

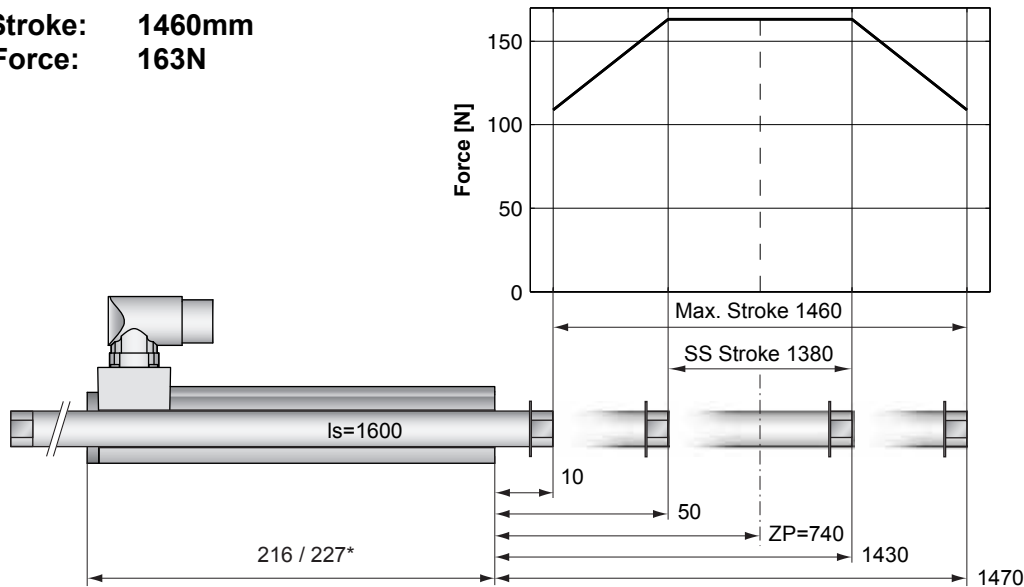
		P01-37...-C P01-37...-C20	P01-37...
Ph 1+	red	A	1
Ph 1-	pink	B	2
Ph 2+	blue	C	3
Ph 2-	grey	D	4
+5VDC	white	E	5
GND	inner Shield	F	6
Sine	yellow	G	7
Cosine	green	H	8
Temp.	black	L	9
Shield	outer Shield	Case	10

Accessoires



Servo Drive:
E1001, E1100-HC, B1100-HC p. 315

Max. Stroke: 1460mm
Peak Force: 163N



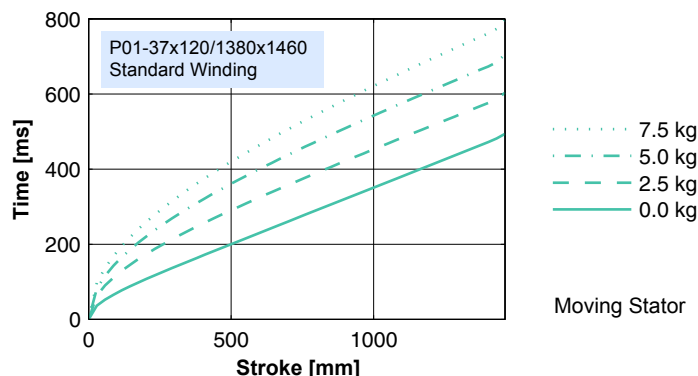
Standard Winding:
 — E1100-HC, 72VDC
 — E1100, 72VDC & E1001, 72VDC

Dimensions in mm
 *Cable Type

Motor Specification

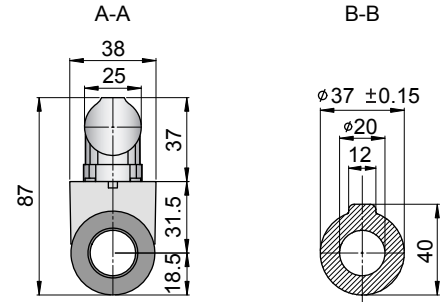
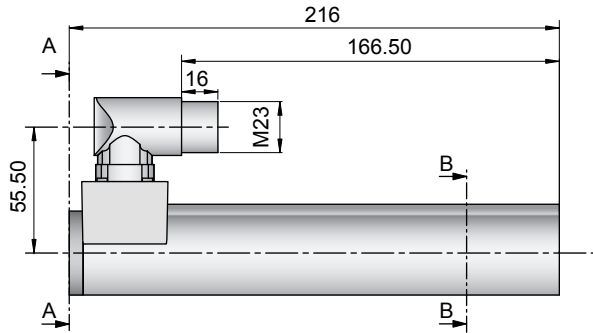
	P01-	Connector Type	Cable Type
		37x120/1380x1460-C	37x120/1380x1460-P150 37x120/1380x1460-C20
Extended Stroke ES	mm (in)	1460 (57.48)	1460 (57.48)
Standard Stroke SS	mm (in)	1380 (54.33)	1380 (54.33)
Peak Force E1100-HC	N (lbf)	163 (36.7)	163 (36.7)
Peak Force E1100 / E1001	N (lbf)	163 (36.7)	163 (36.7)
Cont. Force	N (lbf)	29 (6.5)	29 (6.5)
Cont. Force Fan cooling	N (lbf)	54 (12.2)	54 (12.2)
Border Force	%	67	67
Force Constant	N/A (lbf/A)	20.4 (4.59)	20.4 (4.59)
Max. Current @ 72VDC	A	8.0	8.0
Max. Current @ 48VDC	A	6.3	6.3
Max. Velocity @ 72VDC	m/s (in/s)	3.2 (128)	3.2 (128)
Max. Velocity @ 48VDC	m/s (in/s)	2.2 (85)	2.2 (85)
Phase Resist. 25/80 °C	Ohm	6.2/7.5	6.2/7.5
Phase Inductance	mH	3.1	3.1
Thermal Resistance	°K/W	3.6	3.6
Thermal Time Const.	sec	2900	2900
Stator Diameter	mm (in)	37 (1.46)	37 (1.46)
Stator Length	mm (in)	216 (8.50)	227 (8.94)
Stator Mass	g (lb)	740 (1.63)	740 (1.63)
Slider Diameter	mm (in)	20 (0.79)	20 (0.79)
Slider Length	mm (in)	1600 (62.99)	1600 (62.99)
Slider Mass	g (lb)	3622 (7.99)	3622 (7.99)
Position Repeatability	mm (in)	±0.05 (±0.0020)	±0.05 (±0.0020)
Linearity	%	±0.10	±0.10
Repeatability with EPS	mm (in)	±0.01 (±0.0004)	±0.01 (±0.0004)
Linearity with EPS	mm (in)	±0.01 (±0.0004)	±0.01 (±0.0004)

Position-Time Diagram



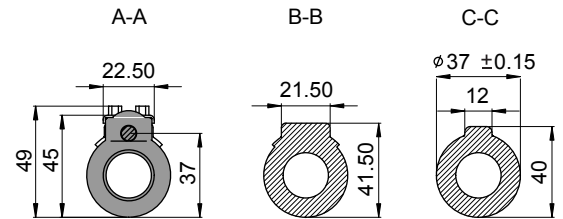
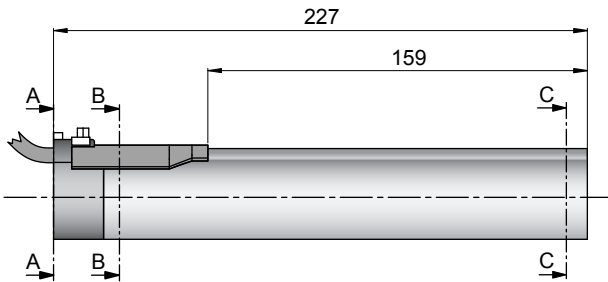
Moving Stator

Connector Type



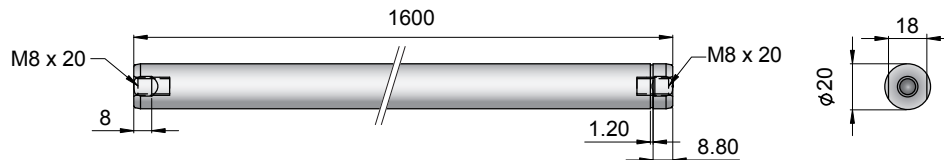
Linear Motor		Stator		Slider	
Type	Art.No	Type	Art. No.	Type	Art. No.
P01-37x120/1380x1460-C	-->	PS01-37x120-C	0150-1223	& PL01-20x1600/1520	0150-1344

Cable Type



Linear Motor		Stator		Slider	
Type	Art.No	Type	Art. No.	Type	Art. No.
P01-37x120/1380x1460-P150	-->	PS01-37x120-P150	0150-1204	& PL01-20x1600/1520	0150-1344
P01-37x120/1380x1460-C20	-->	PS01-37x120-C20	0150-1237	& PL01-20x1600/1520	0150-1344

Slider



Standard Type	Slider Standard	PL01-20x1600/1520	0150-1344
Special Sliders	Heavy Duty Slider with WC/C-Coating	PL02-20x1600/1520	on request
	Hollow Slider hole diameter 6.5mm	PL01-20x1600/1520-L	on request
	High Clearance Slider d=19mm	PL01-19x1600/1520	on request

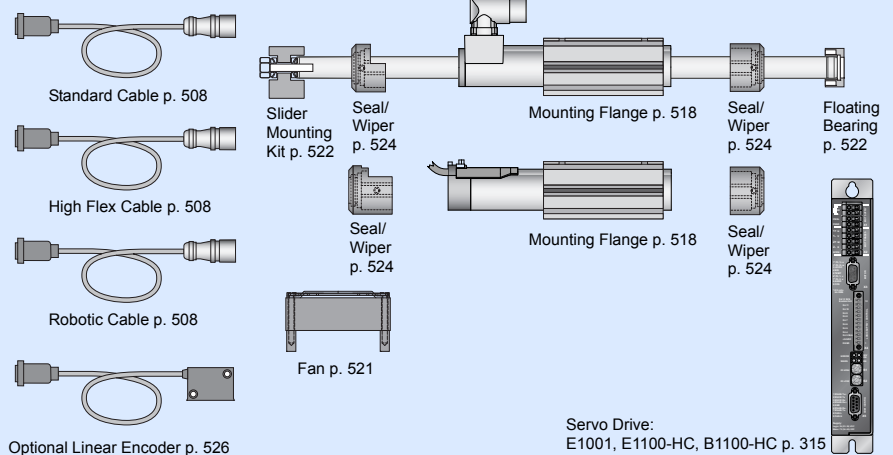
Connectors

Motor Connector Wiring

Cable Length:
P01-37x120... 1.5m
P01-37x120...-C20 0.2m

		P01-37...-C P01-37...-C20	P01-37...
Ph 1+	red	A	1
Ph 1-	pink	B	2
Ph 2+	blue	C	3
Ph 2-	grey	D	4
+5VDC	white	E	5
GND	inner Shield	F	6
Sine	yellow	G	7
Cosine	green	H	8
Temp.	black	L	9
Shield	outer Shield	Case	10

Accessoires



Servo Drive:
E1001, E1100-HC, B1100-HC p. 315