



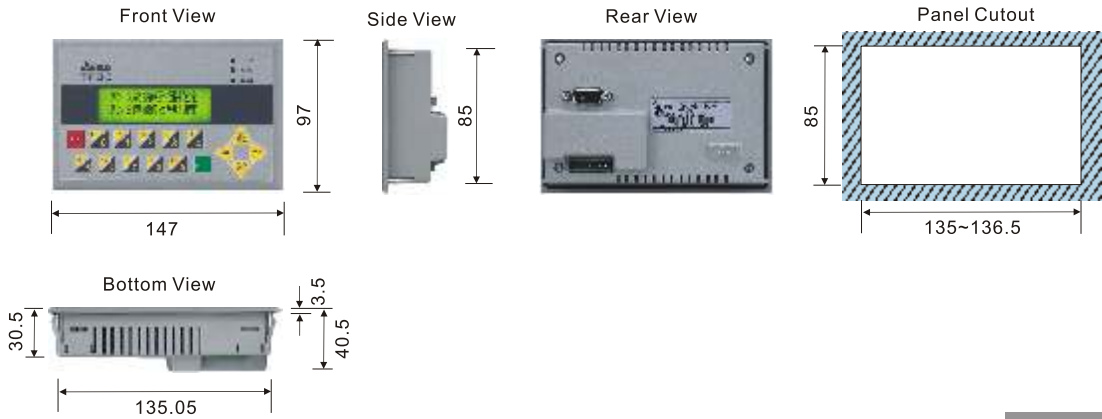


TP Specifications

MODEL		TP02G-AS1	TP04G-AS2	TP05G-BT2	TP08G-BT2
					
LCD MODULE	Display Type	STN LCD			
	Display Color	Monochrome			
	Resolution	160 x 32	128 x 64	160 x 80	240 x 128
	Back Light	about 50 thousand hours at 25°C			
	Display Size	72 x 22mm	3"(67 x 32mm)	3.6" (83 x 41mm)	
Flash Memory		256K Byte		1M Byte	
Program Download Port		COM1(RS-232)			
Serial COM Port	COM1	RS-232	RS-232/422		
	COM2	RS-485			
Extension Interface		Program Copy Card			
Perpetual Calendar (RTC)		N/A	Built-in		
Function Key	System Key	6	7	12	
	Function Key	10	5	12	
Operation Voltage		DC +24V (-10% ~+20%)			
Backup Battery		3V lithium battery CR2032 x 1 / battery life: 5 years			
Buzzer		85dB			
Cooling Method		Natural Air Circulation			
Operating Temp.		0°C to 50°C			
Storage Temp.		-20°C to +60°C			
Ambient Humidity		10% ~ 90% RH 【0~40°C】			
Vibration Resistance		IEC 61131-2 Compliant 5Hz≤f<9Hz = Continuous: 1.75mm / Occasional: 3.5mm 9Hz≤f≤150Hz = Continuous: 0.5g / Occasional: 1.0g X, Y, Z directions for 10 times			
Dimensions (W) x (H) x (D) mm		147 x 97 x 35.5		210 x 122 x 45	
Panel Cutout (W) x (H) mm		136 x 85		196 x 108	
Weight		240g		430g	
Safety Approval (Waterproof for front panel)		IP65/NEMA4 & CE, UL Type 4 indoor			

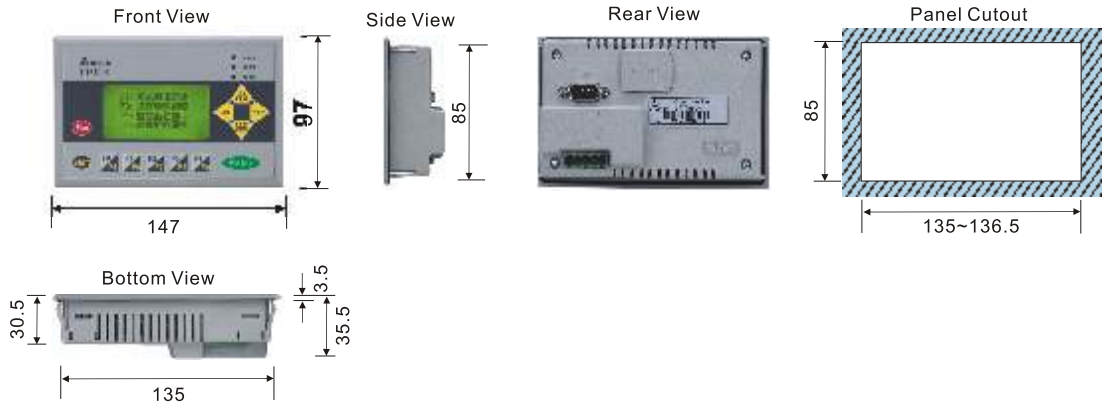
Dimensions

TP02G-AS1



(Units : mm)

TP04G-AS2



(Units : mm)

TP05G-BT2/TP08G-BT2



(Units : mm)

TP Features

Backlight ON/OFF Control via Software

Backlight ON/OFF control via software
 Screen Auto-Change Function:
 ON/OFF status of backlight and screen auto-change function could be controlled by the settings of parameters set in TPEditor software.

TP05G-BT2

TP08G-BT2

5 Lines Display for TP05
 160 x 80 pixels

8 Lines Display for TP08
 240 x 128 pixels



Function Keys (User-defined):
 F1-F5 New functions are: Recipe Write/Read, Screen Scroll function

Extension Port for Program Copy Card (TP-PCC01):

TP series provides optional Program Copy Card (TP-PCC01) to copy user program. The users can easily read and write data and program from TP series without using TPEditor Software rapidly.

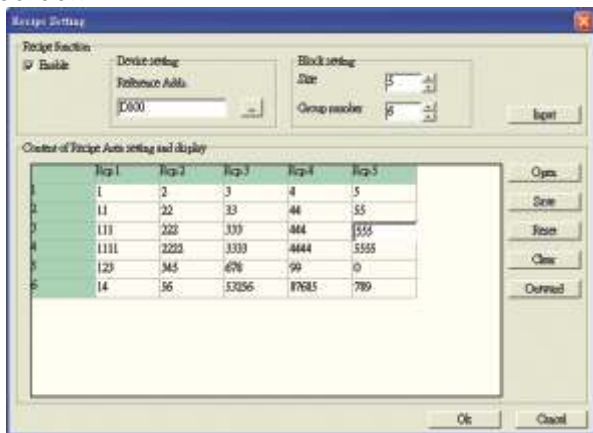


RS-232/422/485
 Two serial COM ports for flexible and wide applications

Product Performance

Feature 1. Screen Scroll Function

This function can divide screen into 2 parts and the users can use function key to scroll the screen



Feature 2. Recipe function / User interface

Provide the same recipe function as HMI to enhance application performance of TP series.

Feature 3. Large Displaying Screen

Offer the best viewing experience and operation environment. Max. 8 lines of text can be displayed.

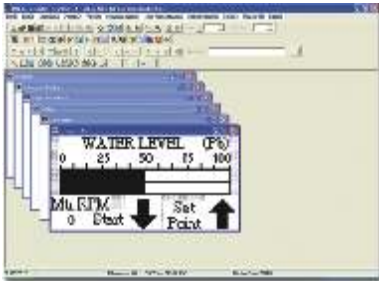
Feature 4. New Macro Command

Support new macro commands in common use, such as process control, arithmetic operation, bit settings and data move, etc. macro commands.

TPEditor Software Features

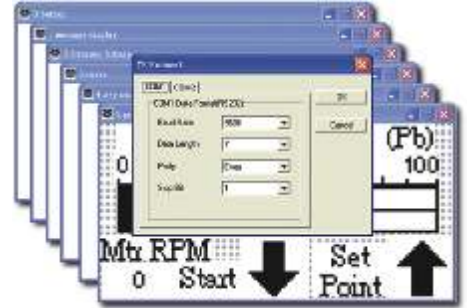
Software Editor--TPEditor

TPEditor provides Windows fonts for editing and page program self-debug. It has numerous functions, including button, numeric input / display, meter, lamp, messages display with both text and graphs and it supports multiple brands of controllers.



Communication

COM1 and COM2 can be used for the same communication protocol with different format controllers to construct single or multiple-drop link.



Page Change Control

Page can be set as invisible. The users can change page by different conditional controls.



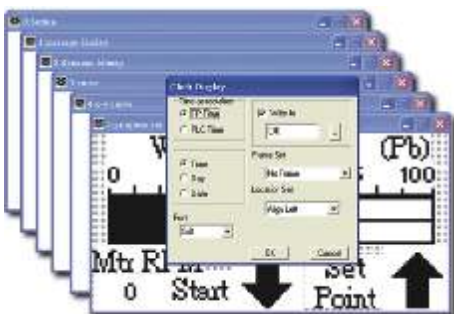
Page Management

It is convenient for the users to preview page quickly and execute add, delete and insert functions for page.



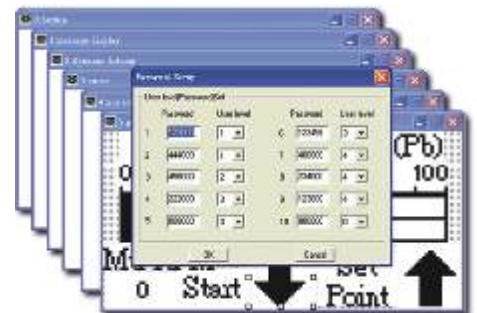
Real Time Clock

It's built-in real time clock (Not for TP02G). It can transfer time data to the PLC that doesn't have real time clock function to have time control function.



User Security Level

It provides 5 security levels with password protection and 10 sets of user passwords for flexible handling.



TPEditor Software Features

Property Table Setting

For better and faster settings, a detachable property table is provided for the user to view and edit in TP more efficiently.

The users can choose traditional method of editing the programs and objects or use property table to work in TP.

Property	
<input checked="" type="checkbox"/> Basic Info	{ Left, Top, Width, Height }
Write Device Addr	D0
HMI Port	COM1
Unit Addr	1
Read Setting	No
Call Setting	No
Function Key Set	No
User Level	0
Frame Setting	No Frame
Font Setting	5x8
Hori. Alignment	Middle
Vert. Alignment	Middle
Value Type	Unsigned
Value Length	16 Bits
Integer Number	5
Decimal Number	0
Max Value	65535
Min Value	0

Operator Keys

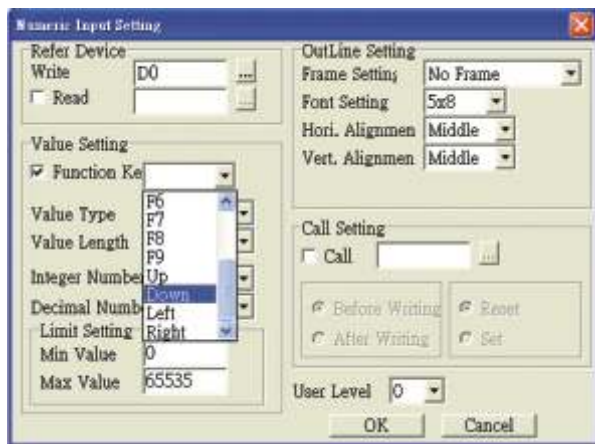
Numeric & Other Function Keys (User-defined)

Numeric Keys: 0-9, decimal point, +/-

Movement Keys : Up and Down

Other Function Keys: Backspace, Shift, Clear (CLR), Enter (ENT) Including F1-F5, total 23 convenient user-defined function keys provided for operation.

System-defined Keys: ESC. It is not user-defined function key.



System Power On Macro

TPEditor has simple Marco command editing function. When TP series powers on, after a predefined time interval, Marco command will be executed automatically. This is very convenient for initial state setup.

